



Holy Names Academy

728 21st Avenue East Seattle, Washington 98112
t: 206.323.4272 | f: 206.323.5254 | admissions@holynames-sea.org | www.holynames-sea.org

ADMISSIONS HANDBOOK 2016–2017

INFORMATION FOR APPLICANTS FOR FALL 2017

Elizabeth Swift, Head of School & Principal
April Little, Vice Principal of Academics
Kimberly Dawson, Vice Principal of Student Life
Eileen Denby, Director of Admissions and Marketing
Caitlin McClain, Assistant Admissions Director

Washington's Best Non-Profit Company To Work For: Seattle Business Magazine
Gold Medal Workplace: Puget Sound Business Journal
U.S Department of Education Blue Ribbon School Award: Four-Time Recipient

HOLY NAMES ACADEMY

MISSION AND PHILOSOPHY STATEMENT

Holy Names Academy, the oldest continually operating school in the State of Washington, was founded by the Sisters of the Holy Names of Jesus and Mary on November 9, 1880. This Catholic secondary school serves young women of diverse ethnic, economic, and religious backgrounds. The unique character of a Holy Names education is achieved in various complementary ways.

We teach, model, and promote Gospel values. This heritage is transmitted to students through school policies, academic programs, and co-curricular activities that encourage personal growth and respect for others. The Academy seeks to prepare young women for lives of leadership and loving service through excellent academic offerings and meaningful student life programs. The academic curriculum challenges students to develop their scholastic capabilities and individual talents through a four-year program of college preparatory courses. An extensive student leadership program offers multiple avenues for participation.

Holy Names Academy seeks to prepare educated women for a life that proclaims the love of God for the human person. Instructed in an atmosphere that fosters the formation of a conscious ethical stance, young women who graduate from the Academy will discover the power that is theirs to direct their lives in peace, justice, and mercy—a manner befitting those whose faith inspires others. We pledge ourselves to preserve the lasting values of our tradition while we design the Academy of the future.

POLICY OF NONDISCRIMINATION

Holy Names Academy admits students of any religion, race, color, ethnicity, or national origin. This stance permeates the educational and admissions policies, scholarship and financial aid programs, and other school-administered activities.

CALENDAR

FOR ADMISSION TO HOLY NAMES ACADEMY IN FALL 2017

High School Regional Information Nights	7 – 9 p.m.
Families from ALL middle schools are welcome to attend whichever evening is most convenient:	
Monday, October 3, 2016	Sacred Heart School (Bellevue)
Tuesday, October 4, 2016	Holy Rosary School (West Seattle)
Wednesday, October 5, 2016	St. Therese Academy (Seattle)
Monday, October 10, 2016	St. John School (Seattle)
Wednesday, October 12, 2016	St. Brendan School (Bothell)
Fall Open House	Sunday, October 23, 2016 Noon – 3 p.m. at HNA
Scholarship/Placement Exam	Saturday, December 10, 2016 OR Sunday, December 11, 2016 8:15 a.m. – 12:45 p.m. at HNA Lunch is provided \$35 pre-registration by December 5 \$45 after December 5 or at the door
Financial Aid Application Deadline	Saturday, December 31, 2016 Separate application required. Apply online at www.holynames-sea.org , go to ADMISSIONS/Financial Aid.
Winter Open House	Thursday, January 5, 2017 6:30 – 8:30 p.m. at HNA
Application Deadline	Monday, January 9, 2017 Apply online at www.holynames-sea.org , go to ADMISSIONS.
Decision Letters Mailed	Wednesday, February 15, 2017
New Student Reply Forms and Registration Fee Due	Thursday, March 2, 2017 – Noon
9th-Grade Registration	Sunday, March 5, 2017 Noon – 4 p.m. at HNA

ADMISSIONS PHILOSOPHY

Admission to Holy Names Academy is based on the school's ability to meet the needs of the applicant and the applicant's potential to benefit from the school's philosophy and rigorous, college-preparatory program. A student's potential is evidenced by her written application, teacher evaluation, school report, academic transcript, report cards, standardized test scores at or above grade level, and satisfactory attendance/punctuality record.

Our program best serves students who:

- Have a solid foundation in academics.
- Are self-disciplined and well organized.
- Value a multicultural community.
- Are respectful, responsible, and contributing citizens.
- Can successfully balance academic challenges with co-curricular activities.
- Are open to spiritual growth and development.

The following are our general admissions standards:

- Grades ranging from B's to A's
- Excellent behavioral, attendance, and punctuality records
- Strong recommendations from teacher and principal
- Scores at or above grade level on Scholarship/Placement Exam

CAMPUS VISIT: HNA FOR A DAY!

Visiting HNA is the best way to see the daily workings of our unique and exciting environment. Visitors will spend the day with a trained student host, attending classes and other school-day activities. Our hosts vary in grade level and interests. Visitors will meet our students and teachers and see firsthand what HNA is all about. *A visit to HNA does not imply admission to the school.* Campus visits are scheduled on two to three days per week from October through early January; specific dates are predetermined by the school and are subject to space availability and school events.

To set up a campus visit:

- Contact the Admissions Office at (206) 720-7805 or at admissions@holynames-sea.org to request a date for your visit.
- Confirm the date with parents and current teachers.

On the day of the visit:

- Dress in accordance with the HNA dress code (included in this handbook).
- The cafeteria lunch entrée is provided. The visiting student may also want to bring a snack or money to purchase additional items from the HNA Café.
- Arrive at HNA at 7:45 a.m.; enter through the front door on 21st Avenue East.
- Arrange to be picked up in front of HNA on 21st Avenue East at 2:40 p.m.

APPLICATION PROCESS for the 2017-2018 SCHOOL YEAR

Apply online (preferred method): www.holynames-sea.org • go to ADMISSIONS

INCOMING 9th GRADERS:

1. Attend the HNA **Fall Open House** (October 23, 2016, noon-3 p.m.) and/or **Winter Open House** (January 5, 2017, 6:30–8:30 p.m.). Attending an Open House is optional.
2. Schedule a **Campus Visit** at HNA (optional—see page 3).
3. Register in advance for the **Scholarship/Placement Exam**, given on December 10 or 11, 2016. The exam is required. Register online at www.holynames-sea.org; choose the ADMISSIONS tab and click SCHOLARSHIP/PLACEMENT EXAMS. Registration can also be made by submitting a written registration form. (For more information on the exam, see page 5.)
4. Complete the **Student Application for Admission** no later than Monday, January 9, 2017. You can do this online at www.holynames-sea.org, ADMISSIONS, or submit an application to HNA via mail or in person. Either method requires your non-refundable **Application Fee of \$30**.
5. Submit the **Confidential Teacher Evaluation Form** to your current teacher. Ask him/her to complete the form and forward it directly to HNA. *NOTE: This is a common form used by several Seattle-area Catholic high schools and may be photocopied for multiple use.*
6. Submit the **Confidential School Report/Transcript Request** to your current principal. Ask him/her to complete the form and forward it directly to HNA. *NOTE: This is a common form used by several Seattle-area Catholic high schools and may be photocopied for multiple use.*

In addition, your principal should forward directly to HNA a copy of the following:

- **Official transcript/permanent record**
- **Standardized test scores from current/previous years**
- **Report cards from the preceding two years**
- **Grades/progress reports from the current year**

TRANSFER STUDENTS:

The admissions process for transfer students is the same as for incoming 9th graders (see above). Applicants for the 10th grade are required to take the Scholarship/Placement Exam. Applicants for the 11th and 12th grades are not required to take the exam, but must include their most recent standardized exam scores with their application.

All application materials should be directed to:

Ms. April Little
Vice Principal of Academics
Holy Names Academy
728 21st Avenue East, Seattle, WA 98112-4058
(206) 323-4272

SCHOLARSHIP/PLACEMENT EXAM

Holy Names Academy administers a Scholarship/Placement Exam to all prospective 9th graders. Students may take the exam on either Saturday, December 10, or Sunday, December 11, 2016. They may pre-register for either date by Monday, December 5, for a fee of \$35. After December 5, the fee is \$45 (this includes students registering on the day of the exam). Register online at www.holynames-sea.org; choose the ADMISSIONS tab and click SCHOLARSHIP/PLACEMENT EXAMS. Registration can also be made by submitting a written registration form. Students are strongly encouraged to pre-register since walk-ins can be accommodated only as space allows.

Students should arrive at HNA for the exam *before* 8:15 a.m. They will have snack/restroom breaks during the morning. The exam will end at approximately 12:15 p.m., and lunch will be served. Students should be picked up by 12:45 p.m.

The exam is one of several components used to determine admission status, placement, and scholarship awards. It consists of a writing sample as well as a standardized, multiple-choice exam including verbal and mathematics sections. Each section is timed according to its length. Students will not need to bring a calculator or pencil; all necessary materials are provided.

If a student requires testing accommodations, arrangements must be made with the Vice Principal of Academics, Ms. April Little, at (206) 720-7821 or alittle@holynames-sea.org, at least two weeks in advance of the testing date. Appropriate documentation is required.

SCHOLARSHIPS

Holy Names Academy seeks to recognize young women who are academically outstanding. One-time and renewable scholarships alike are based on academic merit, as shown by the student's grades, her scores on the Scholarship/Placement Exam, teacher evaluation, school report, and application to HNA. *No separate application for a scholarship is required.*

Students will receive notification of scholarships along with acceptance notification in February 2017. To qualify for a scholarship, a student must take the HNA Scholarship/Placement Exam and complete her admissions file at HNA by the application due date, Monday, January 9, 2017.

TUITION AND FEES

The tuition and fee schedules approved by the Holy Names Academy Board of Trustees for the 2016–2017 academic year are listed below. *The tuition and fee schedule for the 2017–2018 academic year will reflect a modest increase over these amounts:*

Application Fee	\$ 30	Non-refundable
Registration Fee	\$ 500	Non-refundable
Tuition	\$15,540	Per student (in 2016-2017)
Late Fee	\$ 35	Per month for each payment received after the 5th of the month

TUITION PAYMENT PLANS

At the time of registration, parents will choose one of the following four tuition-payment schedules:

- Monthly for 12 months, beginning May 1 and continuing through April 1
- Quarterly on May 1, August 1, November 1, and February 1
- Semi-annually on May 1 and November 1
- Annually on May 1

The first tuition payment at any level of frequency (monthly, quarterly, semi-annually, or annually) is due on **May 1**.

ADDITIONAL FEES (2016-2017)

Books	\$250–\$450	For new books; some used books are available (be sure to buy the correct edition). A book sale is held at HNA in August. Students must purchase their textbooks before the academic year begins.
Student Activity Fee	\$150 (Grades 9-11) \$295 (Grade 12)	Due on or before July 1. Covers yearbook, ASB card, class retreats, testing fees, organizer, handbook, directory, etc. Does not include class fees.
Private Music Lessons (optional) Group Music Lessons (optional)	\$560 \$460	Per semester.

FINANCIAL AID

An important part of the mission of Holy Names Academy is to serve students from a variety of socio-economic backgrounds. For the 2016-2017 school year, \$1,480,000 in financial-aid funds is available to Holy Names Academy families. Currently, 32.1% of enrolled students receive some level of need-based aid.

Financial aid is awarded both directly from Holy Names Academy and via the Academy from the Fulcrum Foundation of the Archdiocese of Seattle. Financial aid may include a Holy Names Academy grant, an endowed scholarship, a student work-study assignment, or a Fulcrum Foundation grant.

Incoming 9th-grade students may anticipate confirmation of financial-aid awards in mid-February. Returning students may anticipate confirmation of financial-aid awards prior to the start of tuition payments for the next academic year.

Financial-aid applications must be completed each year. All families applying for financial aid are expected to complete two forms, an online application and the Holy Names Academy Supplemental Information Form, through the School and Student Services for Financial Aid (SSS). Several supporting documents from the 2015 and 2016 tax years must also be submitted. In addition, some families may qualify for a grant from the Fulcrum Foundation, and will need to complete an additional form, the online Fulcrum Tuition Assistance Application through FACTS Management. **The deadline for financial-aid applications and 2015 supporting documentation is December 31, 2016, for all new and returning students. The deadline for 2016 supporting documentation is March 1, 2017.** Please carefully read and follow the following directions:

Applying For Financial Aid

Complete the Parents' Financial Statement (PFS) on the School and Student Services (SSS) website. Beginning **October 24, 2016**, go to <http://sssbynais.org>, and select "Website for Parents and Families." Create your PFS Online account with your e-mail address and a password. If you applied for financial aid last year, login to the PFS Online as a Returning Family, using the e-mail address and password you set up last year. Create a new account only if you have not submitted a previous SSS application (including to other schools or for other students). Only one PFS application is needed per family, regardless of the number of students applying or the number of schools to which a student applies. The school identification number for Holy Names Academy is **904937**.

School & Student Services will not process your application until you have paid the non-refundable application fee of \$48 and uploaded all necessary documents.

Parents who live in separate households must *each* complete a SSS application and submit supporting documentation to SSS before the student's application can be reviewed.

Submit your 2015 Supporting Documentation to SSS.

Submit your 2015 supporting documentation to SSS *after* you have completed your PFS and by the December 31, 2016, deadline. You may either postal-mail or upload the required documents to SSS. If you choose to postal-mail your documents, be sure to use the SSS Document Cover Sheet and mail by December 15, 2016, to allow time for SSS to receive and upload the documents. Documents can be uploaded 24 hours after you pay for and submit your PFS, and must be submitted prior to the December 31 deadline.

After paying for and submitting your application, you will have access to a tab called "Manage Documents." From the Manage Documents tab, select the purple "Upload" button to the right of the document type name. You can locate additional assistance at <http://sssbynais.org/parents/apply/required-documents>. The system can only accept documents under 10.0 megabytes in size. The following documents must be submitted to SSS:

- Final 2016 paystub(s) for each employed parent
- 2015 W-2 (for each parent) by December 31, 2016
- 2015 Federal Income Tax Form(s), IRS 1040, 1040A, or 1040 EZ, including all additional 2015 Federal Tax Schedules A-F and 1099, by December 31, 2016

Note: Families who completed an application last year should have uploaded these documents. Please verify that your 2015 W-2, tax return, and accompanying tax schedules have been uploaded.

Submit the Holy Names Academy Supplemental Financial Aid Form to SSS.

Download and complete Holy Names Academy Supplemental Financial Aid Form, available on the SSS website, and submit it to SSS by December 31, 2016, in the same way you have chosen to submit your supporting documentation.

Submit your 2016 Supporting Documentation to SSS.

Supporting documents from the 2016 tax year must be received by March 1, 2017. You may either postal-mail or upload the required documents to SSS. If you choose to postal-mail your documents, be sure to use the SSS Document Cover Sheet and mail by February 15, 2017, to allow for SSS to receive and upload the documents. Follow the same process used to upload the 2015 documents. The following 2016 supporting documents must be submitted to SSS:

- 2016 W-2 (for each parent) by March 1, 2017
- 2016 1099's by March 1, 2017

Complete the Fulcrum Foundation Tuition Assistance Application (if applicable)

In addition to financial aid awarded directly from Holy Names Academy, families may be eligible for an additional grant from the Fulcrum Foundation. While factors such as family size and financial obligations are taken into account, grants are typically awarded to families:

- With wages or business income of less than \$75,000 for a family of four or less
or
- With wages or business income of less than \$125,000 for all other family sizes
or
- Any family that has previously received a Fulcrum Foundation grant

If eligible to apply, beginning October 1, 2016, complete your online application at <https://online.factsmgt.com/aid> by December 31, 2016. The institution identification number for Holy Names Academy is **29954**. If you have questions about the process or your potential eligibility, contact Ms. Francis Olson, HNA Business Manager, at (206) 720-7806 or folson@holynames-sea.org.

Financial-Aid Deadlines and Assistance

The deadline for financial-aid applications and 2015 supporting documentation is December 31, 2016, for all new and returning students. The deadline for 2016 supporting documentation is March 1, 2017.

All questions regarding the SSS application process should be directed to SSS Customer Service at (800) 344-8328. For all other questions regarding Holy Names Academy financial aid, please call the Business Manager, Ms. Francis Olson, at (206) 720-7806, or the Admissions Director, Ms. Eileen Denby at (206) 720-7805.

The Holy Names Academy Christmas break is December 19, 2016, through January 2, 2017. During Christmas break, the Business Office, at (206) 720-7806, and Admissions Office, at (206) 720-7805, will be open to assist you or answer questions on Friday, December 30, from 9 a.m. to 3 p.m.

ACADEMIC PROGRAM

GRADUATION REQUIREMENTS

	Holy Names Academy Credits Required for Graduation (1 credit = 1 semester)	Recommended for Admission to Four-Year College/University
English	8	8
Fine Arts	2	2
International Language	4	4 – 8
Laboratory Science	4	6
Mathematics *	6	6 – 8
Physical Education **	2	
Health	1	
Religion	8	
Social Studies ***	4	6
Electives	6	
TOTAL	<hr/> 45	

* Seniors (12th grade) are required to take a math-based quantitative course such as Math Analysis, Calculus, or Statistics, or an Algebra-based science course such as Physics.

** AFTER 9th GRADE, one credit in Physical Education may be met by participation in an HNA interscholastic team sport or a community athletic/exercise program (the latter must include at least 75 hours of supervised activity over the course of 20 weeks). Application for credit must be made through the Academic Office.

*** Social Studies credit: Two of the four required classes in Religion— World Cultures and Contemporary Problems—are approved by the State of Washington for Social Studies credit, so a student will graduate from HNA with a minimum of 8 semesters of approved credit in Social Studies.

RECOMMENDED COURSE OF STUDY

9th Grade

Religion 9: World Cultures

English 9 or Honors English 9

Algebra I, Honors Algebra I, or Honors Algebra II/Trigonometry

International Language (French or Spanish)

Biology

Physical Education / Health

10th Grade

Religion 10: Scripture Literature
English 10 or Honors English 10
Geometry or Honors Geometry
International Language
World History or Advanced Placement World History
Physical Education / Elective (Fine Arts, department electives, AP Art History, AP Biology, AP Computer Science, AP Psychology, etc.)

11th Grade

Religion 11: Morality / Service
English 11 or Honors English 11
Algebra II / Trigonometry or Honors Precalculus / Trigonometry
Chemistry or Honors Chemistry
International Language or elective
Elective (Fine Arts, department electives, AP Art History, AP Computer Science, AP Psychology, AP Studio Art, etc.)

12th Grade

Religion 12: Contemporary Problems
English 12 or AP English Literature 12
United States History and Government or AP United States History
Math Analysis, AP Calculus, AP Statistics, or Algebra-based science
International Language, AP International Language, or elective
Physics, AP Physics, or elective

ADVANCED PLACEMENT PROGRAM

Advanced Placement (AP) is a program administered by the College Board in which high schools can offer college-level courses. Students enrolled in AP courses are tested on a national test day in May. Depending on their score, they may, and often do, earn college credit and/or gain early access to upper-level college classes. The exams are scored on a scale of 1 to 5, with the grade of 5 receiving the rating of “extremely well qualified.” Generally, a score of 3 or above earns college credit, depending on the college’s policies.

Reflecting the school’s commitment to providing broad access to the program, in May 2016 a record 1,004 AP exams in 16 subjects were proctored to 459 candidates at HNA. Among the Class of 2016, 98.9% sat for at least one AP exam during their years at the Academy; 92.3% earned one or more scores of 3 or higher. Students are encouraged to challenge themselves by taking AP classes as appropriate. All students enrolled in an AP class are required to take the corresponding AP exam.

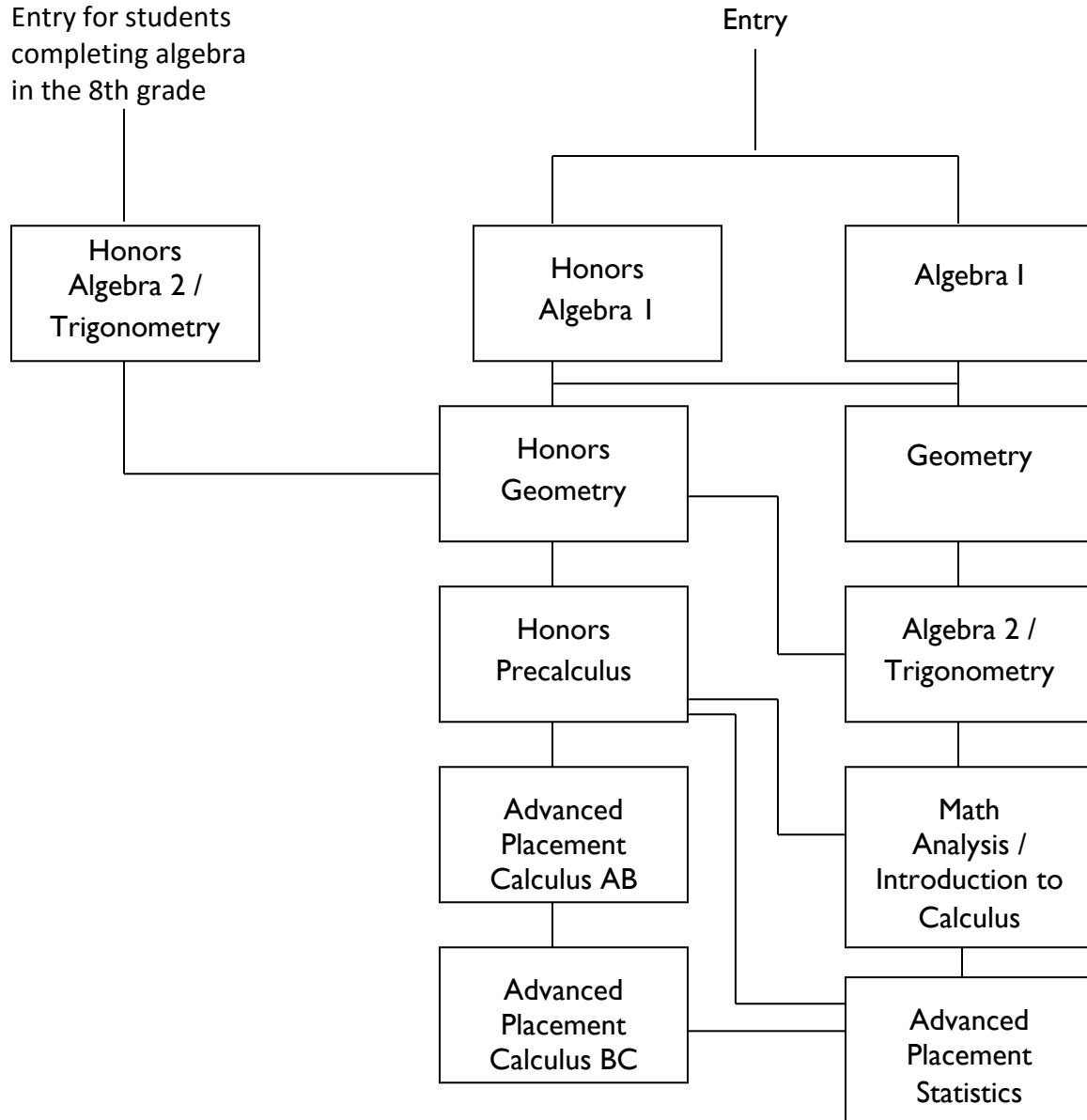
In 2016, the College Board awarded 211 Academy students 225 AP Scholar designations. Thirteen students were named National AP Scholars and one an AP International Diplomate, the highest honors, while 88 were named AP Scholars with Distinction, 46 were named AP Scholars with Honor, and 77 were named AP Scholars. 74.6% of the graduating Class of 2016 earned AP Scholar recognition.

HNA offers an extensive selection of Advanced Placement courses in the areas of Art History, Biology, Calculus, Computer Science, English Language, English Literature, Environmental Science, French Language & Culture, Music Theory, Physics, Psychology, Spanish Language & Culture, Statistics, Studio Art, U.S. History, and World History.

MATHEMATICS PROGRAM

Selection Criteria: Scholarship/Placement Exam
School Recommendation
Registration Interview

Entry for students
completing algebra
in the 8th grade



STUDENT LIFE

TRANSPORTATION

Students arrive at school via their parents or an arranged carpool. In addition, the following Metro bus routes are easily accessible from HNA: #8, #10, #12, #43, and #48.

SCHOOL DAY

School begins at 8 a.m. and ends at 2:30 p.m.

- Six classes daily: 45–50 minutes each.
- Homeroom: 10 minutes each day.
- Break: 10 minutes each day.
- Lunch: 40 minutes; closed campus except for seniors; Consolidated Food Management (CFM) provides a hot lunch program.

HOMEWORK

9th graders will have approximately 90 minutes to two hours of homework per night; upper grades will have more.

DRESS CODE

Holy Names Academy seeks to maintain an atmosphere that is conducive to learning. The way students and faculty are dressed and groomed contributes to a respectful learning environment. The school dress code is based on neatness, cleanliness, good taste, and appropriateness. In addition, the school dress code assists students in learning to make responsible decisions about how to dress appropriately for different situations, such as school, work, church, recreation, and other activities.

General Guidelines:

The following general guidelines are acceptable standards of dress for school that apply to each school day and all student activities:

1. Clothing should be in good repair: no holes, tears, frayed ends, or other signs of excessive wear.
2. Skirts and dresses must be loose-fitting and no more than four inches above the knee. Slits in skirts must meet the same guidelines, extending no more than four inches above the knee.
3. Shorts must be mid-thigh or longer
4. The following tops may not be worn to school:
 - Tops that do not fully cover the front and back of the torso
 - Tops that do not fully cover undergarments
 - Tops that do not have straps of an inch or more
 - Tops that are see-through
5. The following pants may not be worn to school:
 - Anything intended for exercise or sleep (such as yoga pants, running or biking pants, pajama bottoms, etc.)
 - Spandex or leather
 - Blue denim (except on denim days)
6. Leggings are not pants and must be worn under tops, skirts, or dresses that are mid-thigh length or longer.

7. Writing on clothing must be respectful and appropriate for the school environment. Writing added to attire after its purchase is not acceptable.
8. Shoes must be worn in the school building and on the school grounds. Students are responsible for their choice of safe shoes and are encouraged to choose shoes that are appropriate for climbing stairs. Slippers are prohibited. To preserve wood floors, heels must be at least ¾-inch in diameter.
9. Hair styles, hair color, and make-up should be moderate and appropriate for school. Hairstyles, hair color, and make-up that are meant to draw attention to the individual or are noticeably different are unacceptable. Unnatural hair coloring is not permitted.
10. Body piercings that are visible and detectable, such as tongue, lip, eyebrow, or nose piercings, are not acceptable at school or at school activities, except for moderate ear piercings. Body piercing objects covered with Band-Aids are not acceptable. Students found wearing such objects will be asked to remove them or will be sent home.
11. Tattoos that are visible and permanent are not acceptable at school or school activities.
12. Sunglasses and hats, such as visors or hoods, are not to be worn at school.

Special Dress Days:

- **Designated Dress-Up Days, including Liturgy Days**
Appropriate dresses, skirts, or nice pants and tops are expected.
No jeans or shorts.
- **Designated Denim Days**
Students may wear blue denim jeans, in addition to the regular dress code.
- **Designated Sweats Days (for example: Jogathon, semester exams)**
Sweat pants and loose-fitting yoga pants, in addition to the regular dress code.
No running or biking pants, pajama bottoms, or spandex.

CO-CURRICULAR ACTIVITIES

Participation in co-curricular activities gives students many opportunities to apply what they are learning in class to a broader arena. Students gain learning and leadership experiences, and, in some cases, academic credit.

STUDENT LEADERSHIP

Associated Student Body (ASB)	HNA’s student government is led by elected officers and representatives who organize dances, assemblies, and special events. All registered students are part of the student body and receive an ASB card.
Campus Ministry and Community (CMC)	Officers and representatives plan liturgies, retreats, and community service projects for the school.
Sport and Spirit (S&S)	Officers and representatives coordinate spirit activities and promote enthusiasm for school sports.
Homeroom Representatives	Homerooms elect student representatives to ASB, CMC, and S&S. Representatives also serve on their respective Class Boards.
Class Leadership	Students in each grade elect two Co-Class Presidents to lead their Class Board, which is made up of the ASB, CMC, and S&S representatives from their grade level. There are four Class Boards: 9th grade, 10th grade, 11th grade, and 12th grade.
Student Ambassadors	Members of this honorary organization represent the school at its public functions. Chosen for their interpersonal skills, Ambassadors host school events and promote the traditions of the Academy.

Peer Mentors Selected 11th- and 12th graders work in teams to assist with the 9th graders' transition into high school and coach groups of 9th graders throughout the year in developing these skills.

ATHLETICS

All students are encouraged to try out for any of HNA's 13 sports. Ten compete in the 3A Seattle Metropolitan High School League, while crew (rowing), lacrosse, and Ultimate Frisbee are club sports. Crew, cross country, swimming, and track offer no-cut teams, and most other sports have junior varsity and "C" teams for new or less-experienced participants. Holy Names Academy's teams have collectively won the Metro League All-Sports Trophy for nine consecutive years, from 2007-08 through 2015-16.

Fall Crew, Cross Country, Golf, Soccer, Swim/Dive, Volleyball
Winter Basketball, Crew (Conditioning), Gymnastics
Spring Crew, Golf, Lacrosse, Softball, Tennis, Track & Field, Ultimate Frisbee

PERFORMING ARTS

Theatre and Film:

Fall Play A drama or a comedy. Auditions required.
Spring Musical Presented by theatre and music students. Auditions (acting, singing, dancing) required.
New Works Festival Student-written and directed 10-minute plays and short films. Auditions required.
TheatreSports An annual improvisational-acting competition taking place in the fall. Auditions required.

Music:

Concert Choir Open to all students; meets before school twice a week.
Advanced Concert Choir An auditioned group; meets before school three times a week.
Vocal Ensemble A smaller, auditioned group of singers; meets daily as a class.
Jazz Band Open to all students; meets before school.
Chamber Ensembles Ensembles of two to six musicians who perform on strings, woodwinds, or keyboard instruments; meet before school.
Orchestra A large ensemble that features brass, strings, woodwinds, keyboard instruments, and percussion; meets before school.
Instrumental Groups Groups such as the rock band or string quartet are formed in accordance with student interest.
Private Lessons Instruction in voice and most instruments is available for an additional fee. Group lessons may also be arranged in accordance with student and teacher interest.

SPECIAL PROGRAMS/CLASSES

- Community Service** As part of HNA's Religion curriculum, all students volunteer with agencies, schools, and churches throughout the community.
- International Travel** The International Language and other departments offer students foreign travel opportunities.
- Yearbook, *Excalibur*** Students enrolled in Yearbook class produce the school annual.

SPECIAL EVENTS

- Liturgies** Monthly Masses are held at nearby St. Joseph Church.
- Retreats** Each grade has an annual day-long, off-campus class retreat. 11th graders may attend one of two all-weekend Search Retreats.
- Empowerment Week** Activities, presentations, and service opportunities educate students about global issues and realities.
- Peace and Justice Day** Presentations, workshops, and service opportunities teach students about social justice issues.
- Career Day** Students attend workshops at HNA on a wide range of careers.
- Father/Daughter Casino Night**
Mother/Daughter Brunch These occasions offer "quality time"—and lots of fun—for students and parents.
- School Dances** HNA hosts a Homecoming Dance, Winter Ball, Spring Fling, and Junior and Senior Proms. HNA also joins with O'Dea High School for several casual dances.

DEVELOPMENT OPPORTUNITIES

Student Fundraisers:

- Jogathon** Students jog to raise funds for the HNA athletic program.
- Candy Sale** Funds raised generally provide items specifically for student use.

Parent Programs:

- Annual Giving Program** A way for parents to assist in making up the difference between HNA tuition and the actual cost of educating their daughter.
- Endowment Annual Gift Program** Parents can be part of the lasting legacy of HNA by making a gift to an existing endowment or by establishing a named endowment.
- Deck the Dome** HNA's December holiday celebration.
- CHEER! Auction** A gala spring event for the entire HNA community.

CLUBS

- Ani-Mayhem** Celebrates and shares the love of Japanese animation.
- Art Club** A community for those who love to create all types of art projects, including painting, sculpture, and printmaking.
- Book Club** Members select one book each month for reading and discussion, and share ideas and reading suggestions.
- Cards for Kids** Members make greeting, birthday, and holiday cards for the families and friends of patients at Children's Hospital.

Coding Club	A forum to discuss Advanced Placement Computer Science topics and learn about opportunities in the computer-science field.
Do It Yourself Club	Members create fun projects and crafts to enhance daily life.
Drama Club	Open to all students interested in theatre and attending performances.
French Club	Explores French culture and seeks opportunities to speak French.
Girl Power	Discusses issues related to the empowerment of women and advocates for universal girls' education.
Green Team	Dedicated to preserving the environment.
Harry Potter Club	For students interested in reading, watching, and dramatizing Harry Potter scenes, and creating crafts based on themes.
History Bowl	Teams practice history trivia in preparation for competition.
International Thespian Society	An honorary group for students with demonstrated achievements in theatre arts.
Junior Engineering Technical Society(JETS)	An introduction to engineering professionals, careers, and projects.
Junior State of America	Participants discuss political issues and enter competitions.
KHNA News	A year-round TV news station broadcasts to homerooms and on a YouTube channel.
Knowledge Bowl	Members use general and specific knowledge in quick-response competitions.
Mock Trial	Participants study, research, and prepare a hypothetical court case for trial competition, sponsored by the YMCA and the State of Washington.
Multicultural Student Union (MSU)	Open to all students. Educates the student body about diversity issues and cultures. MSU includes the <i>Black Student Union</i> (BSU) and the <i>Asian/Pacific Islander Focus Group</i> (API).
National Honor Society	Promotes scholarship, service, leadership and character. Eligibility begins second semester of 11th grade.
Photography Club	Open to all students who want to learn about photography and share photos.
Random Acts of Kindness Club	Members encourage others to perform selfless deeds and spread kindness in the HNA community.
Robotics Team	Builds a robot to compete in events sponsored by First Robotics.
Sci Fi Club	Seeks to introduce science-fiction literature, television, and film to new readers and share experience among old fans through reading discussions, writing workshops, and film screenings.
Social Justice Committee	Members discuss issues and act to alleviate social injustices that are at the heart of the charism of the Sisters of the Holy Names of Jesus and Mary.
Student Newspaper, <i>The Dome</i>	Covers various aspects of life at HNA, and invites students to submit articles and art.
True Colors	Open to all who strive to create a safe and loving environment that supports all students in our community. Members seek to build relationships of respect and compassion while fostering acceptance for others.
Walt's Club	For students interested in watching and studying Disney animation films.

Holy Names Academy Class of 2016

University and College Choices

Auburn University Hannah Byrne	Cornish College of the Arts Grace Rigoni	Marquette University Jana Ehlert Grace Holderman Bridget Kocer
Bellevue College Caitlin de Leon	Dartmouth College Annika Kouhia	Montana State University, Billings Claire Tevaseu
Boise State University Elizabeth Bradley Grace Frary	DePaul University Solene Daigle	Montana State University, Bozeman Anisa Daher
Boston College Kathryn Peaquin Emily Riccio	Earlham College Phoebe Ewing	New York University Samantha Robbins
Boston University Frances Hausmann	The Evergreen State College Emma Roffey	Oberlin College Olivia Vasquez
Bowdoin College Erika Kiem	Fordham University Stella Stanard	Oregon State University Maegan Benadof Janita Leal Clementine Mulvihill
Brown University Corinne Johnston	Fort Lewis College Mary Cunningham (Fall 2017 after gap year)	Pacific Lutheran University Christina Sevaio
Bryn Mawr College Alana Cabrera Alicia Finney	The George Washington University Caroline Malone Kendall Matt	Pacific University Katerina Cockbain
California Polytechnic State University, San Luis Obispo Gabrielle Demick Brianne Dimalanta Hillary Johnson Olivia Lewis Sophia Looney	Georgetown University Kristen Deife	Portland State University Emma Hamlin
Carroll College Megan Halvorson Bridgette Hughes	Gonzaga University Alana Andrews Anna Hartz Suzanna Kane Niccolina Merlino Jessica Peterson Brooklyn Popp Amanda Schulte Kelsey Wall	Princeton University Abigail Kostolansky
Cascadia College Gabrielle Frogget	Harvard University Alexandra Kieras	Providence College Analise David
Chapman University Caitlyn Jacquemart Kamla Thurtle	Lewis & Clark College Caroline Hennes Elisabeth Miller	Rose-Hulman Institute of Technology Sophie Brusniak
Claremont McKenna College Lindsey Cleary Sarah Tocher	Loyola Marymount University Alexa Andrews Gabriella Conte Annie Flora Jingmei Helm-MacLeod Grace Trask Brynne Weed	St. John's University (New York) Danielle Asencio Le'Chae Bell-Moore Mariana del Fierro Graycee Hein Sophie Herbert Alba Villegas-Sotelo
Clarkson University Delaney Harrison	Loyola University Chicago Sofia Argeres Isabel Brownlow Nicole Cullen Catherine Doyal Elena Murphy	St. Olaf College Elizabeth Dunigan
Colorado College Kathryn Spencer		Saint Martin's University Gina Olsen
Columbia College Chicago Amelia Jacobsen		
Cornell University Erin Kehoe		

(Continued on next page)

Class of 2016 University & College Choices, Continued

San Diego State University Victoria Roszkowski	University of California, Davis Katherine Mackie	University of Utah Lauren Arndt Anna Sajer
Santa Clara University Kirsten Dodroe Anna Fraser-Philbin Gladys Hilerio Emma Hokoda Isabella Morales Sarah Ortiz-Jones Sara Snowden	University of California, Los Angeles Caroline DeFranco Corinne Kieras	University of Washington Emily Astrom Gianna Bowen Megan Bucher Nicole Carver Orla Casey Meredith Coffroth Laura De Boldt Siobhan Duffy Lydia Ely Molly Flemming Alyssa Frugé Isabella Garcia Angelina Gawaran Erin Graves Miranda Howe Aeron Langford Nona Larson Madison Laughlin Mary Luken Raz Maria Mueller Margaret Rutherford Emma Sommerseth Eleanor Strigen Jaclyn Toepfer Pei-Ming Tokuda Racquel West
Scripps College Amelia Jenkins Lila Neal (Fall 2017 after gap year)	University of California, San Diego Hanna Chao Allison Patacsil	
Seattle Pacific University Lauren Estep Sarah Liebel	University of Colorado at Boulder Armistead Colee Sophia Loughlin Maéva Osemene	
Seattle University Margaret Concepcion Andrea Duong Alexandra Kehl Cecillia Ramos Victoria Wu	University of Dallas Katelyn Lazarek	
Stanford University Emilia Darmstadt Isabella Garcia-Camargo	University of Dayton Sarah Ronchetti	University of Washington, Bothell Shivana Ramdin Gellila Solomon
Syracuse University Madeleine Holzman-Kilma	University of Idaho Emily Pierce	Villanova University Mackenzie Jorgensen
Trinity College Dublin (Ireland) Juliana Lynch	University of Notre Dame Anna Kong Anja Renkes Isabelle van Zuylen	Washington State University Emma Bahnasy Eshna Prakash
United States Air Force Academy Cassandra Sartain	University of Oregon Kiley Clisham Chiara Maggiore	Wesleyan University Tara Joy Jenna Sneifer Olivia Waltner
United States Coast Guard Academy Angelou Dunton	University of Pennsylvania Vlasta Schutzenhofer	Western Washington University Grace Clumpner Madeleine Figgins Nalica Hennings Ella Hileman-Kaplan Jamea Nielsen Molly Whitson Mackenzie Wilson
University of British Columbia (Canada) Kayla Florendo Gabriela Santana-Ufret	University of Portland Kathryn Fine Jamie Himes Callan Liffring Brooke Paulsen	Whitman College Leila Hauser Maude Lustig Sophia Strabo
University of California, Berkeley Claire Goudy	University of St. Andrews (Scotland) Allina Flaas Julia Koh	
	University of San Francisco Kathryn Badley Elizabeth Watt	
	University of Stirling (Scotland) Caroline Lee	

CLASS OF 2016 SCHOLARSHIPS, HONORS, AND AWARDS

Listed on the following pages are the academic scholarships, honors, and awards received by the members of the Holy Names Academy Class of 2016 as of July 15, 2016. *The school the student chose to attend is listed in italics.* These awards total over \$30.99 million and were received by 86.2% of the class. Most scholarships are renewable as long as academic standards are met by the students. Awards are listed in the following order: university scholarships and honors, awards from corporations or organizations, and academic distinctions. **AP Scholar designations reflect results received from the May 2016 examinations.** Some special awards are explained in further detail at the end of the list.

Alana Andrews	Boise State University Gem Scholarship	\$14,050/yr
	Boise State University Osborn Excellence Scholarship	\$2,000/yr
	Gonzaga University Joseph M. Cataldo Scholarship	\$5,000/yr
	Gonzaga University Trustee Scholarship	\$19,000/yr
	Santa Clara University SCU Dean's Scholarship	\$6,000/yr
	University of Idaho Discover Idaho Platinum Scholarship	\$8,000/yr
	University of Portland President's Scholarship	\$23,000/yr
	Washington State University Engineering Award Placeholder	\$2,000/yr
	Washington State University Glenn Terrell Presidential Scholarship	\$4,000/yr
	Washington State University Regents Scholars Award	\$4,000/yr
	Leo Gilmartin Scholarship	\$3,000/yr
	President's Award for Outstanding Educational Excellence - Gold Award	
	Washington State Honors Award	
	AP Scholar with Distinction***	
	National AP Scholar***	
Valedictorian		
<i>Gonzaga University</i>		
Alexa Andrews	Loyola Marymount Presidential Scholarship	\$28,000/yr
	Loyola Marymount University LMU Early Action Award	\$2,000/yr
	Santa Clara University SCU Dean's Scholarship	\$2,500/yr
	Washington State University National Merit Scholarship	\$9,934/yr
	University of Portland President's Scholarship	\$23,000/yr
	National Merit Scholarship	\$2,500
	National Merit Scholarship Corporation Finalist	
	President's Award for Outstanding Educational Excellence - Gold Award	
	Washington State Honors Award	
	AP Scholar with Distinction***	
Salutatorian		
<i>Loyola Marymount University</i>		
Sofia Argeres	Gonzaga University Trustee Scholarship	\$19,000/yr
	Loyola University Chicago Presidential Scholarship	\$21,000/yr
	Northeastern University Northeastern Achievement Award	\$10,000/3 yrs
	University of San Francisco President's Scholarship	\$19,000/yr
	President's Award for Outstanding Educational Excellence - Gold Award	
	Washington State Honors Award	
	AP Scholar with Distinction***	
<i>Loyola University Chicago</i>		
Lauren Arndt	Baylor University Provost's Gold Scholarship	\$14,000/yr
	University of Arizona - Arizona Excellence Scholarship	\$8,000/yr
	University of Arizona Last Chance Scholarship	\$5,000
	University of Mississippi Academic Excellence Scholarship	\$1,500/yr
	University of Montana Non-Resident Entering Student Scholarship	\$7,500
	University of New Mexico Amigo Scholarship	\$15,537/yr
	University of Tampa Athletic Award	\$2,000
	University of Tampa Dean's Scholarship	\$10,000/yr
	Burger King Scholars Award	\$1,000
	President's Award for Outstanding Academic Achievement - Silver Award	
	<i>University of Utah</i>	

Danielle Asencio	Gonzaga University Dussault Scholarship	\$12,500/yr
	St. John's University Catholic High School Award	\$2,500/yr
	St. John's University Hugh L. Carey Award	\$1,250/yr
	St. John's University St. Vincent De Paul Scholarship	\$18,000/yr
	St. John's University - University Dean's Scholarship	\$2,000
	University of Portland Holy Cross Scholarship	\$10,000/yr
	Washington State University Experience WSU Scholarship	\$1,000
	Washington State University - University Achievement Award	\$2,000
	<i>St. John's University - Queens</i>	
Emily Astrom	Gonzaga University Athletic Scholarship	\$15,000/yr
	Gonzaga University Trustee Scholarship	\$19,000/yr
	University of Alabama Presidential Scholarship	\$25,950/yr
	President's Award for Outstanding Educational Excellence - Gold Award	
	Washington State Honors Award	
	AP Scholar with Distinction*** <i>University of Washington</i>	
Kathryn Badley	Catholic University of America CUA Parish Scholarship	\$3,000/yr
	Catholic University of America CUA Scholarship	\$15,000/yr
	La Salle University Founder's Scholarship	\$22,000/yr
	La Salle University Resident Scholar Award	\$2,000/yr
	Loyola University Chicago Dean's Scholarship	\$16,000/yr
	Regis University Regis Achievement Catholic Award	\$16,000/yr
	Seattle University Bellarmine Scholarship	\$17,000/yr
	St. John's University Catholic High School Award	\$2,500/yr
	St. John's University Hugh L. Carey Award	\$3,000/yr
	St. John's University Scholastic Excellence Scholarship	\$21,000/yr
	University of San Francisco Hilltop Award	\$13,000/yr
	Xavier University (Ohio) Xavier Scholarship	\$19,000/yr
	Xavier University (Ohio) Housing Scholarship	\$2,000/yr
	AP Scholar* <i>University of San Francisco</i>	
Emma Bahnasy	Gonzaga University Dussault Scholarship	\$12,500/yr
	Washington State University - University Achievement Award	\$2,000
	<i>Washington State University</i>	
Le'Chae Bell-Moore	St. John's University Catholic High School Award	\$2,500/yr
	St. John's University Hugh L. Carey Award	\$3,000/yr
	St. John's University Ozanam Scholars Award	\$10,000/yr
	St. John's University St. Vincent De Paul Scholarship	\$18,000/yr
	<i>St. John's University - Queens</i>	
Maegan Benadof	Oregon State University Evergreen State Scholarship	\$5,000/yr
	<i>Oregon State University</i>	
Gianna Bowen	Seattle University Champion Scholarship	\$20,000/yr
	University of California Santa Cruz Undergraduate Dean's Award	\$5,000/yr
	Washington State University - University Achievement Award	\$2,000
	President's Award for Outstanding Educational Excellence - Gold Award	
	Washington State Honors Award	
	AP Scholar* AP Scholar with Honor*** (2015) <i>University of Washington</i>	
Elizabeth Bradley	Boise State University Western Undergraduate Exchange Scholarship	\$10,612/yr
	Gonzaga University Aloysius Scholarship	\$5,500
	University of Idaho Discover Idaho Silver Scholarship	\$2,000/yr
	University of Idaho Monnet, Jean & Albert CBE Scholarship	\$2,500
	<i>Boise State University</i>	

Isabel Brownlow	Duquesne University Academic Scholarship	\$13,000/yr
	Duquesne University On-Campus Room Award	\$3,000/yr
	Loyola University Chicago Trustee Scholarship	\$18,000/yr
	Michigan State University - University Scholars Award	\$8,000/yr
	Michigan State University Presidential Study Abroad Scholarship	\$5,000
	Oregon State University Evergreen State Scholarship	\$6,000/yr
	President's Award for Outstanding Educational Excellence - Gold Award <i>Loyola University Chicago</i>	
Sophie Brusniak	Gonzaga University Trustee Scholarship	\$19,000/yr
	Gonzaga University Honors Scholarship	\$1,000/yr
	Rose-Hulman Institute of Technology Rose-Hulman Merit Scholar Award	\$20,750/yr
	Santa Clara University SCU Dean's Scholarship	\$6,000/yr
	President's Award for Outstanding Educational Excellence - Gold Award	
	Washington State Honors Award	
	AP Scholar with Distinction*** <i>Rose-Hulman Institute of Technology</i>	
Megan Bucher	Gonzaga University Trustee Scholarship	\$19,000/yr
	Northeastern University Dean's Scholarship	\$12,000/yr
	Northeastern University - Admitted to University Honors Program	
	Santa Clara University	\$8,900/yr
	University of Oregon Summit Scholarship	\$9,000/yr
	University of Oregon - Admitted to Robert D. Clark Honors College	
	University of San Diego Alcalá Award	\$25,000/yr
	University of San Diego Catholic Education Scholarship	\$2,000/yr
	Washington State University - University Achievement Award	\$4,000
	President's Award for Outstanding Educational Excellence - Gold Award Washington State Honors Award AP Scholar with Honor** <i>University of Washington</i>	
Hannah Byrne	President's Award for Outstanding Academic Achievement - Silver Award	
	AP Scholar* <i>Auburn University</i>	
Alana Cabrera	Clark University Achievement Scholarship	\$15,000/yr
	Lewis & Clark College Endowed Scholarship	\$1,500/yr
	Lewis & Clark College Faculty Scholarship	\$16,000/yr
	Mills College Faculty Scholarship	\$23,000/yr
	Mount Holyoke College Outside Scholarship	\$2,000/yr
	Saint Mary's College Saint Mary's Madeleva Scholarship	\$16,000/yr
	President's Award for Outstanding Educational Excellence - Gold Award	
	Washington State Honors Award AP Scholar* <i>Bryn Mawr College</i>	
Nicole Carver	Illinois Institute of Technology Henry T. Heald Scholarship	\$25,000/yr
	University of Idaho Discover Idaho Gold Scholarship	\$6,000/yr
	Washington State University - University Achievement Award	\$4,000
	President's Award for Outstanding Educational Excellence - Gold Award	
	Washington State Honors Award <i>University of Washington</i>	
Orla Casey	Franklin University Franklin University Merit Award	\$15,000
	President's Award for Outstanding Educational Excellence - Gold Award	
	Washington State Honors Award	
	AP Scholar with Distinction*** <i>University of Washington</i>	
Hanna Chao	Seattle University Trustee Scholarship	\$22,000/yr
	Washington State University - University Achievement Award	\$4,000

<i>Hanna Chao, Continued</i>	Washington State University - Admitted to Honors College President's Award for Outstanding Educational Excellence - Gold Award Washington State Honors Award AP Scholar with Honor** <i>University of California, San Diego</i>	
Lindsey Cleary	President's Award for Outstanding Educational Excellence - Gold Award Washington State Honors Award AP Scholar with Distinction*** <i>Claremont McKenna College</i>	
Kiley Clisham	Chapman University Chancellor Scholar Award Gonzaga University Trustee Scholarship Loyola Marymount University LMU Arrupe Scholarship Loyola Marymount University LMU Early Action Award Loyola University Chicago Damen Scholarship Marquette University Père Marquette Award University of Oregon Summit Scholarship President's Award for Outstanding Educational Excellence - Gold Award Washington State Honors Award AP Scholar* <i>University of Oregon</i>	\$22,000/yr \$19,000/yr \$22,200/yr \$2,000/yr \$20,000/yr \$15,600/yr \$9,000/yr
Grace Clumpner	<i>Western Washington University</i>	
Katerina Cockbain	Linfield College Presidential Scholarship Pacific University Music Talent Award Pacific University Pacesetter Scholarship Pacific University Presidential Scholarship Pacific University Washington Student Achievement Award Seattle University Champion Scholarship University of Oregon Apex Scholarship University of Oregon School of Music and Dance Scholarship Western Washington University Western Scholars Award Western Washington University - Admission with Distinction Willamette University - Willamette University Scholarship President's Award for Outstanding Educational Excellence - Gold Award Washington State Honors Award AP Scholar with Distinction*** <i>Pacific University</i>	\$20,500/yr \$6,000/yr \$2,000/yr \$15,000/yr \$2,000/yr \$20,000/yr \$4,000/yr \$1,000/yr \$2,000 \$22,000/yr
Meredith Coffroth	University of Portland President's Scholarship University of San Diego Alcalá Award University of San Diego - Admitted to the USD Honors Program Washington State University - University Achievement Award President's Award for Outstanding Educational Excellence - Gold Award Washington State Honors Award AP Scholar with Distinction*** <i>University of Washington</i>	\$22,000/yr \$25,000/yr \$4,000
Armistead Colee	University of Montana Western States Scholarship University of Portland Holy Cross Scholarship <i>University of Colorado at Boulder</i>	\$6,000/yr \$12,000/yr
Margaret Concepcion	Seattle University Trustee Scholarship University of Washington Bothell Chancellor's Scholarship Western Washington University President's Scholarship Western Washington University - Admission with Distinction President's Award for Outstanding Educational Excellence - Gold Award Washington State Honors Award AP Scholar with Distinction*** <i>Seattle University</i>	\$22,000/yr \$7,500 \$3,000

Gabriella Conte	Chapman University Dean's Scholarship	\$16,000/yr
	Gonzaga University Regents Scholarship	\$17,500/yr
	Loyola Marymount University LMU Achievement Award	\$13,900/yr
	Loyola Marymount University LMU Early Action Award	\$2,000/yr
	Saint Mary's College of California Merit Award	\$18,000/yr
	Saint Mary's College of California - Admitted Honors at Entrance	
	Seattle University Champion Scholarship	\$20,000/yr
	Washington State University - University Achievement Award	\$4,000
	President's Award for Outstanding Educational Excellence - Gold Award	
	Washington State Honors Award	
	AP Scholar with Honor**	
	<i>Loyola Marymount University</i>	
Nicole Cullen	Fordham University Jogues Scholarship	\$10,000/yr
	Gonzaga University Trustee Scholarship	\$19,000/yr
	Loyola Marymount University LMU Arrupe Scholarship	\$18,100/yr
	Loyola Marymount University LMU Early Action Award	\$2,000/yr
	Loyola University Chicago Damen Scholarship	\$20,000/yr
	University of Portland President's Scholarship	\$22,000/yr
	University of San Francisco President's Scholarship	\$19,000/yr
	President's Award for Outstanding Educational Excellence - Gold Award	
	Washington State Honors Award	
	AP Scholar with Distinction***	
	Salutatorian	
<i>Loyola University Chicago</i>		
Mary Cunningham	Carroll College All Saints Award	\$11,000/yr
	Carroll College Opportunity Award	\$2,000/yr
	The Evergreen State College Evergreen Scholastic Achievement Award	\$600
	Northland College Eco-Visionary Scholarship	\$1,000/yr
	Northland College Northland Academic Scholarship	\$14,000/yr
	Northland College Northland Leadership Scholarship	\$1,500/yr
	Rocky Mountain College Presidential Scholarship	\$13,000/yr
	<i>Fort Lewis College (starting Fall 2017)</i>	
Anisa Daher	Montana State University Western Undergraduate Exchange Scholarship	\$13,350/yr
	Montana State University - Admitted to the Honors College	
	ACE (Architecture, Construction & Engineering) Scholarship from	\$5,000
	American Council of Engineering Companies	
	President's Award for Outstanding Educational Excellence - Gold Award	
	Washington State Honors Award	
AP Scholar*		
<i>Montana State University, Bozeman</i>		
Solene Daigle	DePaul University DePaul Presidential Scholarship	\$18,000/yr
	Gonzaga University Trustee Scholarship	\$19,000/yr
	President's Award for Outstanding Academic Achievement - Silver Award	
	Washington State Honors Award	
	AP Scholar with Distinction***	
<i>DePaul University</i>		
Emilia Darmstadt	National Merit Scholarship Corporation Commended Student	
	President's Award for Outstanding Educational Excellence - Gold Award	
	Washington State Honors Award	
	AP Scholar with Distinction***	
	Valedictorian	
<i>Stanford University</i>		
Analise David	Salve Regina University Trustee Scholarship	\$16,000/yr
	Washington State University - University Achievement Award	\$2,000
	AP Scholar*	
	<i>Providence College</i>	

Laura De Boldt	Colorado School of Mines CSM Merit Scholarship	\$12,000/yr
	Gonzaga University Joseph M. Cataldo Scholarship	\$5,000/yr
	Gonzaga University Trustee Scholarship	\$19,000/yr
	Oregon State University Evergreen State Scholarship	\$8,000/yr
	President's Award for Outstanding Educational Excellence - Gold Award	
	Washington State Honors Award	
	AP Scholar with Distinction*** <i>University of Washington</i>	
Caitlin de Leon	<i>Bellevue College</i>	
Caroline DeFranco	President's Award for Outstanding Educational Excellence - Gold Award	
	Washington State Honors Award	
	AP Scholar with Distinction*** <i>University of California, Los Angeles</i>	
Kristen Deife	Boston College - Admitted to Honors Program	
	University of Southern California USC Presidential Scholarship	\$25,720/yr
	American Association of University Women Scholarship - Mathematics	\$100
	National Merit Scholarship	\$2,500
	National Merit Scholarship Corporation Finalist	
	President's Award for Outstanding Educational Excellence - Gold Award	
	Washington State Honors Award	
	AP Scholar with Distinction*** National AP Scholar**** Valedictorian <i>Georgetown University</i>	
Mariana del Fierro	Canisius College Benefactor's Scholarship	\$11,000/yr
	Canisius College Resident Student Award	\$2,000/yr
	Loyola University New Orleans Scholarship	\$11,000/yr
	Manhattanville College Provost's Scholarship	\$18,000/yr
	Manhattanville College Resident Involvement Scholarship	\$2,000/yr
	Pacific Lutheran University Academic Achievement Award	\$17,000/yr
	Regis University Blue & Gold Catholic Award	\$9,000/yr
	St. John's University Academic Promise Award	\$11,000/yr
	St. John's University Catholic High School Award	\$2,500/yr
	St. John's University Hugh L. Carey Award	\$3,000/yr
	Xavier University of Louisiana Xavier University Scholarship <i>St. John's University - Queens</i>	\$5,000/yr
Gabrielle Demick	Arizona State University - University Scholarship	\$8,000/yr
	DePaul University St. Vincent de Paul Scholarship	\$14,000/yr
	Dominican University Presidential Scholarship	\$20,000/yr
	Gonzaga University Dussault Scholarship	\$12,500/yr
	Loyola University Chicago Dean's Scholarship	\$16,000/yr
	Regis University Regis Achievement Catholic Award	\$16,000/yr
	Washington State University - University Achievement Award	\$2,000
	<i>California Polytechnic State University, San Luis Obispo</i>	
Brienne Dimalanta	California Polytechnic State University Cal Poly Outreach Scholarship	\$2,000/yr
	Pacific University Honors Scholarship	\$4,000/yr
	Pacific University Pacesetter Scholarship	\$3,000/yr
	Pacific University Presidential Scholarship	\$15,000/yr
	Pacific University Washington Student Achievement Award	\$2,000/yr
	University of the Pacific - Pacific Scholarship	\$3,500/yr
	University of the Pacific President's Scholarship	\$6,500/yr
	Seattle University Champion Scholarship	\$20,000/yr
	President's Award for Outstanding Educational Excellence - Gold Award	
	Washington State Honors Award AP Scholar* <i>California Polytechnic State University, San Luis Obispo</i>	

Kirsten Dodroe	St. Olaf College Dean's Scholarship	\$28,000/yr
	University of Portland President's Scholarship	\$23,000/yr
	University of San Francisco University Scholars Award	\$22,000/yr
	President's Award for Outstanding Educational Excellence - Gold Award	
	Washington State Honors Award	
	AP Scholar with Distinction*** <i>Santa Clara University</i>	
Catherine Doyal	AP Scholar*	
	<i>Loyola University Chicago</i>	
Siobhan Duffy	University of California Santa Cruz Undergraduate Dean's Award	\$5,000/yr
	President's Award for Outstanding Educational Excellence - Gold Award	
	Washington State Honors Award	
	AP Scholar* <i>University of Washington</i>	
Elizabeth Dunigan	Gonzaga University Regents Scholarship	\$17,500/yr
	St. Olaf College Dean's Scholarship	\$15,000/yr
	Santa Clara University SCU Incentive Award	\$10,200/yr
	Whitman College Whitman Endowed Scholarship	\$10,000/yr
	Willamette University - Willamette University Scholarship	\$23,000/yr
	President's Award for Outstanding Educational Excellence - Gold Award	
	Washington State Honors Award	
	AP Scholar with Honor** <i>St. Olaf College</i>	
Angelou Dunton	United States Coast Guard Academy Appointment	»\$70,000/yr
	President's Award for Outstanding Educational Excellence - Gold Award	
	Washington State Honors Award	
	AP Scholar* (2015) <i>United States Coast Guard Academy</i>	
Andrea Duong	Seattle University Bellarmine Scholarship	\$17,000/yr
	AP Scholar*	
	<i>Seattle University</i>	
Jana Ehlert	Chapman University Dean's Scholarship	\$16,000/yr
	Fordham University Fordham Tuition Award	\$10,000/yr
	Gonzaga University Deans Scholarship	\$16,000/yr
	Marquette University Père Marquette Award	\$13,100/yr
	Loyola Marymount University LMU Achievement Award	\$4,200/yr
	Loyola Marymount University LMU Early Action Award	\$2,000/yr
	Seattle University Champion Scholarship	\$20,000/yr
	Washington State University - University Achievement Award	\$2,000
	Western Washington University Western Scholars Award	\$1,500
	President's Award for Outstanding Educational Excellence - Gold Award	
	Washington State Honors Award	
	AP Scholar with Distinction*** <i>Marquette University</i>	
Lydia Ely	President's Award for Outstanding Educational Excellence - Gold Award	
	Washington State Honors Award	
	AP Scholar with Distinction*** <i>University of Washington</i>	
Lauren Estep	Azusa Pacific University Council for Christian Colleges and Universities Tuition Exchange Scholarship	\$35,540/yr
	Seattle Pacific University Fine and Performing Arts Scholarship	\$1,500/yr
	Seattle Pacific University President's Scholar Award	\$18,000/yr
	Seattle University Bellarmine Scholarship	\$17,000/yr
	Western Washington University Western Scholars Award	\$1,500

<i>Lauren Estep, Continued</i>	Whitworth University Whitworth Scholarship President's Award for Outstanding Academic Achievement - Silver Award Washington State Honors Award <i>Seattle Pacific University</i>	\$16,000/yr
Phoebe Ewing	College of the Atlantic Deans Scholarship Cornish College of the Arts Cornish Design Scholarship Guilford College Achievement Award Guilford College Guilford Works Award Kalamazoo College Lux Esto Scholarship University of Puget Sound PS Faculty Scholarship <i>Earlham College</i>	\$12,500/yr \$15,000/yr \$12,500/yr \$1,500/yr \$11,000/yr \$16,000/yr
Madeleine Figgins	University of Portland Holy Cross Scholarship Washington State University - University Achievement Award Western Washington University Western Scholars Award President's Award for Outstanding Educational Excellence - Gold Award AP Scholar* <i>Western Washington University</i>	\$12,000/yr \$2,000 \$1,500
Kathryn Fine	Fairfield University Bellarmine Scholarship Loyola University Chicago Loyola Scholarship Loyola University Maryland Presidential Scholarship Regis University Board of Trustee Catholic Award Saint Joseph's University Presidential Scholarship Seattle University Bellarmine Scholarship University of Portland Tuition Exchange Scholarship University of San Francisco Hilltop Award President's Award for Outstanding Educational Excellence - Gold Award Washington State Honors Award AP Scholar* <i>University of Portland</i>	\$18,000/yr \$19,000/yr \$19,000/yr \$18,000/yr \$20,000/yr \$17,000/yr ≈\$42,000/yr \$13,000/yr
Alicia Finney	Beloit College Presidential Scholarship Earlham College Cunningham Scholarship Western Washington University Multicultural Achievement Program Scholarship Western Washington University Western Scholars Award National Hispanic Recognition Program Scholar President's Award for Outstanding Academic Achievement - Silver Award Washington State Honors Award AP Scholar with Distinction*** <i>Bryn Mawr College</i>	\$23,000/yr \$27,000/yr \$3,000/yr \$2,000
Allina Flaatt	President's Award for Outstanding Educational Excellence - Gold Award Washington State Honors Award AP Scholar with Distinction*** <i>University of St. Andrews (Scotland)</i>	
Molly Flemming	Illinois Institute of Technology Henry T. Heald Scholarship Rose-Hulman Institute of Technology Rose-Hulman Merit Scholar Award President's Award for Outstanding Educational Excellence - Gold Award Washington State Honors Award AP Scholar* <i>University of Washington</i>	\$27,500/yr \$10,000/yr
Annie Flora	Loyola Marymount University LMU Arrupe Scholarship Loyola Marymount University LMU Athletic Award Loyola Marymount University LMU Early Action Award President's Award for Outstanding Educational Excellence - Gold Award Washington State Honors Award <i>Loyola Marymount University</i>	\$16,900/yr Undisclosed \$2,000/yr

Kayla Florendo	Gonzaga University Trustee Scholarship	\$19,000/yr
	University of Portland President's Scholarship	\$22,000/yr
	Western Washington University Multicultural Achievement Program Scholarship	\$3,000
	Western Washington University - Admission with Distinction	
	President's Award for Outstanding Educational Excellence - Gold Award	
	Washington State Honors Award	
	AP Scholar* <i>University of British Columbia</i>	
Grace Frary	Arizona State University Dean Scholarship	\$12,500/yr
	Boise State University Gem Scholarship	\$14,050/yr
	Gonzaga University Deans Scholarship	\$16,000/yr
	Loyola Marymount University LMU Achievement Award	\$5,400/yr
	Seattle University Bellarmine Scholarship	\$17,000/yr
	University of Arizona - Arizona Excellence Scholarship	\$9,500/yr
	University of San Diego Catholic Education Scholarship	\$2,000/yr
	University of San Francisco Hilltop Award	\$13,000/yr
	Washington State University - University Achievement Award	\$2,000
	President's Award for Outstanding Educational Excellence - Gold Award <i>Boise State University</i>	
Anna Fraser-Philbin	Creighton University Magis Award	\$19,000/yr
	Gonzaga University Trustee Scholarship	\$19,000/yr
	New York University Tandon Scholarship	\$28,520/yr
	National Merit Scholarship Corporation Commended Student	
	President's Award for Outstanding Educational Excellence - Gold Award	
	Washington State Honors Award AP Scholar with Distinction*** <i>Santa Clara University</i>	
Gabrielle Frogget	<i>Cascadia College</i>	
Alyssa Frugé	Chapman University Dean's Scholarship	\$16,000/yr
	Franklin University Franklin University Merit Award	\$15,000
	Gonzaga University Deans Scholarship	\$16,000/yr
	Richmond University in London Presidential Scholar Award	\$20,000
	Seattle University Bellarmine Scholarship	\$17,000/yr
	University of Portland President's Scholarship	\$20,000/yr
	University of Puget Sound Dean's Scholarship	\$18,000/yr
	University of San Diego Catholic Education Scholarship	\$2,000/yr
	University of San Francisco Provost's Merit Scholarship	\$16,000/yr
	AP Scholar with Distinction*** <i>University of Washington</i>	
Isabella Garcia	Seattle University Bellarmine Scholarship	\$17,000/yr
	University of Portland President's Scholarship	\$21,000/yr
	Washington State University - University Achievement Award	\$2,000
	President's Award for Outstanding Educational Excellence - Gold Award	
	AP Scholar* <i>University of Washington</i>	
Isabella Garcia-Camargo	Rice University Trustee Distinguished Scholarship	\$24,500/yr
	University of Washington Honors Undergraduate Scholar Award	»\$12,000/yr
	University of Washington - Admitted to Honors Program	
	National Hispanic Recognition Program Scholar	
	President's Award for Outstanding Educational Excellence - Gold Award	
	Washington State Honors Award	
	AP Scholar with Distinction*** National AP Scholar**** Valedictorian <i>Stanford University</i>	

Angelina Gawaran	Gonzaga University Trustee Scholarship	\$19,000/yr
	Seattle University Trustee Scholarship	\$22,000/yr
	Washington State University - University Achievement Award	\$4,000
	Western Washington University President's Scholarship	\$3,000
	Western Washington University - Admission with Distinction	
	President's Award for Outstanding Educational Excellence - Gold Award	
	Washington State Honors Award	
	AP Scholar* <i>University of Washington</i>	
Claire Goudy	Gonzaga University Trustee Scholarship	\$19,000/yr
	Loyola University Chicago Presidential Scholarship	\$21,000/yr
	Loyola University Chicago - Admitted to the Honors Program	
	Washington State University Regents Scholars Award	\$4,000/yr
	Washington State University - University Achievement Award	\$2,000
	Washington State University - Admitted to Honors College	
	National Merit Scholarship Corporation Commended Student	
	President's Award for Outstanding Educational Excellence - Gold Award	
	Washington State Honors Award	
	AP Scholar with Distinction*** Salutatorian <i>University of California, Berkeley</i>	
Erin Graves	Gonzaga University Trustee Scholarship	\$19,000/yr
	Seattle University Trustee Scholarship	\$22,000/yr
	University of British Columbia Outstanding International Student Award	\$6,000 CD
	President's Award for Outstanding Educational Excellence - Gold Award	
	Washington State Honors Award	
	AP Scholar with Distinction*** <i>University of Washington</i>	
Megan Halvorson	Carroll College All Saints Award	\$11,000/yr
	Carroll College Opportunity Award	\$2,000/yr
	University of Montana Western States Scholarship	\$7,500/yr
	AP Scholar* <i>Carroll College (Montana)</i>	
Emma Hamlin	Colorado State University Western Undergraduate Exchange Scholarship	\$9,183/yr
	President's Award for Outstanding Educational Excellence - Gold Award	
	Washington State Honors Award	
	AP Scholar with Distinction*** <i>Portland State University</i>	
Delaney Harrison	Champlain College Champlain Scholarship	\$21,000/yr
	Clarkson University Clarkson Scholarship	\$26,000/yr
	Washington State University Engineering Award Placeholder	\$500
	Washington State University - University Achievement Award	\$2,000
	AP Scholar* <i>Clarkson University</i>	
Anna Hartz	DePaul University St. Vincent de Paul Scholarship	\$12,000/yr
	Gonzaga University Dussault Scholarship	\$12,500/yr
	Loyola University Chicago Dean's Scholarship	\$16,000/yr
	Marquette University Père Marquette Award	\$13,600/yr
	Oregon State University Evergreen State Scholarship	\$3,000/yr
	University of San Diego Catholic Education Scholarship	\$2,000/yr
	AP Scholar with Honor** <i>Gonzaga University</i>	
Leila Hauser	Hobart and William Smith Colleges Trustee Scholarship	\$25,000/yr
	University of New Hampshire Presidential Scholarship	\$10,000/yr
	University of New Hampshire - Admitted to University Honors Program	

<i>Leila Hauser, Continued</i>	Whitman College Whitman Endowed Scholarship	\$2,000/yr
	Whitman College Stephen Penrose Scholarship	\$13,000/yr
	President's Award for Outstanding Educational Excellence - Gold Award	
	Washington State Honors Award	
	AP Scholar with Distinction***	
	Salutatorian	
	<i>Whitman College</i>	
Frances Hausmann	Santa Clara University SCU Incentive Award	\$10,500/yr
	President's Award for Outstanding Educational Excellence - Gold Award	
	Washington State Honors Award	
	AP Scholar with Distinction***	
	<i>Boston University</i>	
Graycee Hein	Washington College Academic Tuition Scholarship	\$15,000/yr
	Washington State University - University Achievement Award	\$2,000
	St. John's University Catholic High School Award	\$2,500/yr
	St. John's University Hugh L. Carey Award	\$3,000/yr
	St. John's University Scholastic Excellence Scholarship	\$21,000/yr
	AP Scholar with Distinction***	
	<i>St. John's University - Queens</i>	
Jingmei Helm-MacLeod	Gonzaga University Trustee Scholarship	\$19,000/yr
	Loyola Marymount University LMU Achievement Award	\$9,700/yr
	Loyola Marymount University LMU Early Action Award	\$2,000/yr
	University of Portland President's Scholarship	\$23,000/yr
	University of San Diego Trustee Scholarship	\$17,500/yr
	President's Award for Outstanding Educational Excellence - Gold Award	
	Washington State Honors Award	
	AP Scholar*	
<i>Loyola Marymount University</i>		
Caroline Hennes	Gonzaga University Trustee Scholarship	\$19,000/yr
	Lewis & Clark College Faculty Scholarship	\$16,000/yr
	University of Portland President's Scholarship	\$22,000/yr
	Western Washington University President's Scholarship	\$3,000
	Western Washington University - Admission with Distinction	
	Whitman College Stephen Penrose Scholarship	\$13,000/yr
	President's Award for Outstanding Educational Excellence - Gold Award	
	Washington State Honors Award	
	AP Scholar*	
<i>Lewis & Clark College</i>		
Nalica Hennings	Western Washington University Department of Music Scholarship	\$2,500
	Greater Seattle Chapter of The Links, Incorporated, Scholarship	\$1,500
	<i>Western Washington University</i>	
Sophie Herbert	Catholic University of America CUA Scholarship	\$25,000/yr
	Fordham University Fordham Loyola Scholarship	\$12,500/yr
	St. John's University Presidential Scholarship	\$38,630/yr
	Saint Joseph's University Excellence Award	\$2,500/yr
	Saint Joseph's University Presidential Scholarship	\$22,000/yr
	Western Washington University President's Scholarship	\$4,000
	Western Washington University Western Foundation Scholarship	\$2,000
	President's Award for Outstanding Educational Excellence - Gold Award	
	Washington State Honors Award	
	AP Scholar with Distinction***	
<i>St. John's University - Queens</i>		
Ella Hileman-Kaplan	Rhodes College Rhodes Award	\$5,000/yr
	University of Oregon Summit Scholarship	\$9,000/yr
	University of San Diego USD Trustee Scholar Award	\$17,500/yr

Ella Hileman-Kaplan, <i>Continued</i>	Western Washington University Tuition Award	\$4,700
	Western Washington University WWU Opportunity Pathway Scholarship	\$2,000
	Western Washington University College of Business and Economics Distinguished Scholar Award	\$1,000
	President's Award for Outstanding Educational Excellence - Gold Award	
	Washington State Honors Award	
	AP Scholar with Distinction***	
	<i>Western Washington University</i>	
Gladys Hilerio	Santa Clara University SCU Dean's Scholarship	\$18,000/yr
	Santa Clara University SCU Incentive Award	\$26,400/yr
	National Hispanic Recognition Program Scholar	
	President's Award for Outstanding Educational Excellence - Gold Award	
	Washington State Honors Award	
AP Scholar with Distinction***		
<i>Santa Clara University</i>		
Jamie Himes	Carroll College All Saints Award	\$11,000/yr
	Carroll College Opportunity Award	\$2,000/yr
	Regis University Regis Achievement Catholic Award	\$16,000/yr
	Seattle University Arrupe Scholarship	\$11,000/yr
	University of Portland Holy Cross Scholarship	\$18,000/yr
<i>University of Portland</i>		
Emma Hokoda	Santa Clara University SCU Dean's Scholarship	\$6,800/yr
	Santa Clara University - Admitted to University Honors Program	
	Sewanee The University of the South Georgia M. Wilkins Scholarship	\$20,000/yr
	Western Washington University President's Scholarship	\$6,000/2 yrs
	Western Washington University Western Foundation Scholarship	\$2,000
	Western Washington University - Admission with Highest Honors	
	President's Award for Outstanding Educational Excellence - Gold Award	
Washington State Honors Award		
AP Scholar with Distinction***		
Salutatorian		
<i>Santa Clara University</i>		
Grace Holderman	Kansas State University Honors Scholarship	Undisclosed
	Loyola University Chicago Dean's Scholarship	Undisclosed
	Marquette University Pere Marquette Award	Undisclosed
	President's Award for Outstanding Educational Excellence - Gold Award	
	AP Scholar with Honor**	
<i>Marquette University</i>		
Madeleine Holzman-Klima	Syracuse University Undergraduate Athletic Award	\$15,372/yr
	Syracuse University Athletic Book Allowance	\$800/yr
	<i>Syracuse University</i>	
Miranda Howe	George Fox University Bruin Achievement Award	\$8,000/yr
	Oregon State University Evergreen State Scholarship	\$8,000/yr
	American Society of Civil Engineers Young Member Forum Scholarship	\$1,000
	National Merit Scholarship Corporation Commended Student	
	President's Award for Outstanding Educational Excellence - Gold Award	
	Washington State Honors Award	
AP Scholar with Distinction***		
<i>University of Washington</i>		
Bridgette Hughes	Carroll College Opportunity Award	\$2,000/yr
	Carroll College Trustee Scholarship	\$13,000/yr
	President's Award for Outstanding Academic Achievement - Silver Award	
	AP Scholar*	
<i>Carroll College (Montana)</i>		

Amelia Jacobsen	Columbia College Chicago Columbia College Scholarship AP Scholar* <i>Columbia College Chicago</i>	\$7,000/yr
Caitlyn Jacquemart	Chapman University Chancellor Scholar Award Gonzaga University Regents Scholarship Pacific University Honors Scholarship Pacific University Washington Student Achievement Award President's Award for Outstanding Educational Excellence - Gold Award Washington State Honors Award AP Scholar* <i>Chapman University</i>	\$22,000/yr \$17,500/yr \$19,000/yr \$2,000/yr
Amelia Jenkins	Carroll College Opportunity Award Carroll College Presidential Scholarship Gonzaga University Regents Scholarship Santa Clara University Incentive Award Washington State University - University Achievement Award President's Award for Outstanding Educational Excellence - Gold Award Washington State Honors Award AP Scholar* <i>Scripps College</i>	\$1,000/yr \$15,000/yr \$17,500/yr \$2,600/yr \$4,000
Hillary Johnson	California Polytechnic State University Cal Poly Outreach Scholarship Seattle University Trustee Scholarship University of Montana Western Undergraduate Exchange Scholarship University of Oregon Summit Scholarship President's Award for Outstanding Educational Excellence - Gold Award Washington State Honors Award AP Scholar with Distinction*** Valedictorian <i>California Polytechnic State University, San Luis Obispo</i>	\$2,000 \$22,000/yr \$14,400/yr \$9,000/yr
Corinne Johnston	President's Award for Outstanding Educational Excellence - Gold Award Washington State Honors Award AP Scholar with Distinction*** National AP Scholar**** Valedictorian <i>Brown University</i>	
Mackenzie Jorgensen	Santa Clara University SCU Incentive Award Villanova University Presidential Scholarship President's Award for Outstanding Educational Excellence - Gold Award Washington State Honors Award AP Scholar with Distinction*** <i>Villanova University</i>	\$2,200/yr \$62,400/yr
Tara Joy	Boston University Presidential Scholarship National Merit Scholarship Corporation Finalist President's Award for Outstanding Educational Excellence - Gold Award Washington State Honors Award AP Scholar with Distinction*** National AP Scholar**** Valedictorian <i>Wesleyan University</i>	\$20,000/yr
Suzanna Kane	Baylor University Provost's Gold Scholarship Gonzaga University Deans Scholarship University of Alabama Capstone Scholar Scholarship University of Arizona AZ Excellence Tuition Scholarship University of Portland President's Scholarship President's Award for Outstanding Educational Excellence - Gold Award	\$14,000/yr \$16,000/yr \$3,500/yr \$10,000/yr \$20,000/yr

<i>Suzanna Kane, Continued</i>	Washington State Honors Award AP Scholar* <i>Gonzaga University</i>	
Alexandra Kehl	Pace University President's Scholarship University of Portland President's Scholarship University of San Francisco Provost's Merit Scholarship Seattle University Campion Scholarship Seton Hall University - University Scholarship Seton Hall University Summer Scholarship President's Award for Outstanding Educational Excellence - Gold Award Washington State Honors Award <i>Seattle University</i>	\$26,000/yr \$20,000/yr \$16,000/yr \$20,000/yr \$22,000/yr \$1,500/3 yr
Erin Kehoe	California Polytechnic State University Cal Poly Outreach Scholarship California Polytechnic State University Elmer & Frances Eads Scholarship University of California, Davis - Jastro Scholarship University of California, Davis - Admitted to University Honors Program University of Vermont Presidential Scholarship University of Vermont - Admitted to Honors College National Merit Scholarship Corporation Commended Student President's Award for Outstanding Educational Excellence - Gold Award Washington State Honors Award AP Scholar with Distinction*** Valedictorian <i>Cornell University</i>	\$2,000 \$2,100 \$6,000/yr \$17,000/yr
Erika Kiem	President's Award for Outstanding Educational Excellence - Gold Award Washington State Honors Award AP Scholar with Distinction*** National AP Scholar**** Valedictorian <i>Bowdoin College</i>	
Alexandra Kieras	American Association of University Women Scholarship - Technology National Merit Scholarship National Merit Scholarship Corporation Finalist President's Award for Outstanding Educational Excellence - Gold Award Washington State Honors Award AP Scholar with Distinction*** National AP Scholar**** Valedictorian <i>Harvard University</i>	\$100 \$2,500
Corinne Kieras	St. Olaf College Dean's Scholarship University of British Columbia Outstanding International Student Award University of Colorado Boulder Chancellor's Achievement Scholarship University of Florida Sunshine Scholarship University of New Mexico Amigo Scholarship President's Award for Outstanding Educational Excellence - Gold Award Washington State Honors Award AP Scholar* <i>University of California, Los Angeles</i>	\$15,000/yr \$6,000 CD \$6,250/yr \$16,000/yr \$15,537/yr
Bridget Kocer	Gonzaga University Regents Scholarship Marquette University Père Marquette Award University of San Diego Catholic Education Scholarship University of San Diego USD Presidential Scholar Award President's Award for Outstanding Academic Achievement - Silver Award Washington State Honors Award AP Scholar with Honor** <i>Marquette University</i>	\$17,500/yr \$14,200/yr \$2,000/yr \$12,500/yr

Julia Koh	The George Washington University Presidential Academic Scholarship	\$25,000/yr
	Loyola Marymount University LMU Arrupe Scholarship	\$17,000/yr
	Loyola Marymount University LMU Early Action Award	\$2,000/yr
	Loyola Marymount University LMU Award	\$2,000/yr
	Loyola University Chicago Presidential Scholarship	\$21,000/yr
	Loyola University Chicago - Admitted to the Honors Program	
	Santa Clara University SCU Incentive Award	\$2,700/yr
	President's Award for Outstanding Educational Excellence - Gold Award	
	Washington State Honors Award	
	AP Scholar with Distinction***	
	<i>University of St. Andrews (Scotland)</i>	
Anna Kong	ACE (Architecture, Construction & Engineering) Scholarship	\$7,500
	President's Award for Outstanding Educational Excellence - Gold Award	
	Washington State Honors Award	
	AP Scholar with Honor** <i>University of Notre Dame</i>	
Abigail Kostolansky	President's Award for Outstanding Educational Excellence - Gold Award	
	Washington State Honors Award	
	AP Scholar with Distinction***	
	Valedictorian <i>Princeton University</i>	
Annika Kouhia	American Association of University Women Scholarship - Science	\$100
	Elks National Foundation Most Valuable Student Scholarship	\$1,500
	National Merit Scholarship	\$2,500
	National Merit Scholarship Corporation Finalist	
	President's Award for Outstanding Educational Excellence - Gold Award	
	Washington State Honors Award	
	AP Scholar with Distinction*** National AP Scholar**** Valedictorian <i>Dartmouth College</i>	
Aeron Langford	University of Washington CSE Departmental Scholarship	\$500
	Western Washington University President's Scholarship	\$4,000
	Western Washington University Western Foundation Scholarship	\$2,000
	Western Washington University - Admission with Highest Honors	
	President's Award for Outstanding Educational Excellence - Gold Award	
	Washington State Honors Award	
	AP Scholar with Distinction*** National AP Scholar**** Valedictorian <i>University of Washington</i>	
	Nona Larson	Western Washington University President's Scholarship
President's Award for Outstanding Educational Excellence - Gold Award		
Washington State Honors Award		
AP Scholar with Distinction*** <i>University of Washington</i>		
Madison Laughlin	Seattle University Trustee Scholarship	\$22,000/yr
	University of San Diego Alcalá Award	\$25,000/yr
	University of San Diego Catholic Education Scholarship	\$2,000/yr
	University of San Francisco Provost's Merit Scholarship	\$16,000/yr
	President's Award for Outstanding Educational Excellence - Gold Award	
	Washington State Honors Award	
	AP Scholar with Distinction*** <i>University of Washington</i>	

Katelyn Lazarek	University of Dallas Provost's Scholarship President's Award for Outstanding Educational Excellence - Gold Award AP Scholar with Honor*** <i>University of Dallas</i>	\$21,000/yr
Janita Leal	Oregon State University Evergreen State Scholarship University of Hawaii Western Undergraduate Exchange Scholarship President's Award for Outstanding Educational Excellence - Gold Award <i>Oregon State University</i>	\$5,000/yr \$16,308/yr
Caroline Lee	University of Aberdeen International Undergraduate Scholarship University of Stirling International Undergraduate Scholarship Western Washington University President's Scholarship Western Washington University Western Foundation Scholarship President's Award for Outstanding Educational Excellence - Gold Award Washington State Honors Award AP Scholar with Honor*** <i>University of Stirling (Scotland)</i>	Undisclosed 2,000GBP/yr \$6,000/2 yrs \$2,000
Olivia Lewis	California Polytechnic State University Cal Poly Outreach Scholarship Creighton University Creighton University Founders Award Gonzaga University Regents Scholarship Providence College Friar Scholarship Saint Joseph's University Presidential Scholarship University of Portland President's Scholarship President's Award for Outstanding Educational Excellence - Gold Award Washington State Honors Award AP Scholar* AP Scholar with Honor*** (2015) <i>California Polytechnic State University, San Luis Obispo</i>	\$2,000 \$17,000/yr \$17,500/yr \$18,000/yr \$20,000/yr \$22,000/yr
Sarah Liebel	Pacific Lutheran University Academic Achievement Award University of Puget Sound Founder's Award <i>Seattle Pacific University</i>	\$17,000/yr \$8,000/yr
Callan Liffing	Linfield College Faculty Scholarship University of Portland Holy Cross Scholarship University of Portland President's Endowed Scholarship AP Scholar* <i>University of Portland</i>	\$16,000/yr \$12,000/yr \$2,000/yr
Sophia Looney	California Polytechnic State University Cal Poly Outreach Scholarship California Polytechnic State University - Admitted to Honors Program Gonzaga University Trustee Scholarship Rose-Hulman Institute of Technology Rose-Hulman Merit Scholar Award University of Idaho Honors Scholarship University of Idaho Western Undergraduate Exchange Scholarship University of Idaho - Admitted to the Honors Program University of San Diego Alcalá Award University of San Diego Catholic Education Scholarship University of San Diego USD Scholarship ACE (Architecture, Construction & Engineering) Scholarship ACE Scholarship from Magnusson Klemencic Associates Comcast Leaders and Achievers Scholarship Greeks in Washington Greek History Competition Scholarship Northwest AHEPA Family Educational Foundation Seattle AHEPA Scholarship President's Award for Outstanding Educational Excellence - Gold Award Washington State Honors Award AP Scholar with Distinction*** Salutatorian <i>California Polytechnic State University, San Luis Obispo</i>	\$2,000 \$19,000/yr \$20,750/yr \$2,000/yr \$10,808/yr \$25,000/yr \$2,000/yr \$5,550/yr \$5,000 \$5,000 \$1,000 \$1,000 \$3,000

Sophia Loughlin	Santa Clara University SCU Dean's Scholarship	\$6,000/yr
	University of Colorado Boulder Engineering Merit Scholarship	\$2,500/yr
	University of Colorado Boulder Presidential Scholarship	\$13,750/yr
	University of Colorado Boulder - Admitted to Honors Program	
	University of Washington - Admitted to Honors Program	
	President's Award for Outstanding Educational Excellence - Gold Award	
	Washington State Honors Award	
	AP Scholar with Distinction*** <i>University of Colorado at Boulder</i>	
Mary Luken Raz	Seattle University Trustee Scholarship	\$22,000/yr
	University of San Francisco President's Scholarship	\$19,000/yr
	Western Washington University President's Scholarship	\$3,000
	Western Washington University - Admission with Distinction	
	President's Award for Outstanding Educational Excellence - Gold Award	
	Washington State Honors Award	
	AP Scholar* <i>University of Washington</i>	
Maude Lustig	University of Portland President's Scholarship	\$23,000/yr
	Whitman College Stephen Penrose Scholarship	\$13,000/yr
	National Merit Scholarship Corporation Commended Student	
	President's Award for Outstanding Educational Excellence - Gold Award	
	Washington State Honors Award	
	AP Scholar with Distinction*** National AP Scholar**** <i>Whitman College</i>	
Juliana Lynch	Case Western Reserve University - University Scholarship	\$22,500/yr
	Elon University Presidential Scholarship	\$6,000/yr
	The George Washington University Presidential Academic Scholarship	\$20,000/yr
	Gonzaga University Trustee Scholarship	\$19,000/yr
	Northeastern University Northeastern Achievement Award	\$10,000/3 yrs
	Santa Clara University SCU Incentive Award	\$6,100/yr
	President's Award for Outstanding Educational Excellence - Gold Award	
	Washington State Honors Award AP Scholar with Distinction*** <i>Trinity College Dublin (Ireland)</i>	
K. Grace Mackie	California Polytechnic State University Cal Poly Outreach Scholarship	\$2,000
	Fordham University Fordham Loyola Scholarship	\$12,500/yr
	Fordham University Fordham Tuition Award	\$10,500/yr
	Loyola Marymount University LMU Achievement Award	\$9,600/yr
	Loyola Marymount University LMU Early Action Award	\$2,000/yr
	University of Oregon Apex Scholarship	\$4,000/yr
	University of San Diego USD Presidential Scholar Award	\$12,500/yr
	President's Award for Outstanding Educational Excellence - Gold Award	
	Washington State Honors Award AP Scholar with Honor** <i>University of California, Davis</i>	
Chiara Maggiore	University of Oregon Apex Scholarship	\$4,000/yr
	Western Washington University Western Scholars Award	\$1,500
	President's Award for Outstanding Educational Excellence - Gold Award	
	AP Scholar* <i>University of Oregon</i>	
Caroline Malone	President's Award for Outstanding Educational Excellence - Gold Award	
	Washington State Honors Award	
	AP Scholar with Honor** <i>The George Washington University</i>	

Kendall Matt	Fordham University Fordham Loyola Scholarship	\$12,500/yr
	Fordham University Fordham Tuition Award	\$8,500/yr
	The George Washington University Presidential Academic Scholarship	\$25,000/yr
	Loyola University Chicago Presidential Scholarship	\$21,000/yr
	Marquette University Pere Marquette Award	\$12,400/yr
	Santa Clara University SCU Incentive Award	\$2,000/yr
	University of Oregon Summit Scholarship	\$9,000/yr
	Xavier University (Ohio) Xavier Scholarship	\$19,000/yr
	President's Award for Outstanding Educational Excellence - Gold Award	
	Washington State Honors Award	
	AP Scholar with Distinction***	
	<i>The George Washington University</i>	
Niccolina Merlino	Central Washington University Trustees Tuition Award	\$2,000/1st yr \$1,000/2nd yr
	Gonzaga University Dussault Scholarship	\$12,500/yr
	Pacific University Presidential Scholarship	\$15,000/yr
	Pacific University Washington State Achievement Award	\$2,000/yr
	University of Portland Holy Cross Scholarship	\$18,000/yr
	University of Puget Sound President's Scholarship	\$20,000/yr
	Seattle University Champion Scholarship	\$20,000/yr
	President's Award for Outstanding Educational Excellence - Gold Award	
	AP Scholar with Honor**	
	<i>Gonzaga University</i>	
Elisabeth Miller	Lewis & Clark College Trustee Scholarship	\$19,000/yr
	President's Award for Outstanding Educational Excellence - Gold Award	
	Washington State Honors Award	
	AP Scholar with Distinction*** <i>Lewis & Clark College</i>	
Isabella Morales	Case Western Reserve University - University Scholarship	\$26,000/yr
	Gonzaga University Trustee Scholarship	\$19,000/yr
	Rose-Hulman Institute of Technology Commitment Scholar Award	\$32,342/yr
	University of Rochester Whipple Science Scholarship	\$12,000/yr
	President's Award for Outstanding Educational Excellence - Gold Award	
	Washington State Honors Award AP Scholar with Honor** <i>Santa Clara University</i>	
Maria Mueller	California Institute of Technology Caltech Scholarship	\$13,686/yr
	Case Western Reserve University - University Scholarship	\$31,000/yr
	Macalester College DeWitt Wallace Distinguished Scholarship	\$18,000/yr
	Washington State University Glenn Terrell Presidential Scholarship	\$4,000/yr
	University of California Los Angeles UCLA Achievement Scholarship	\$10,000/yr
	National Merit Scholarship Corporation Commended Student	
	President's Award for Outstanding Educational Excellence - Gold Award	
	Washington State Honors Award	
	AP Scholar with Distinction***	
	National AP Scholar**** Valedictorian <i>University of Washington</i>	
Clementine Mulvihill	Oregon State University Evergreen State Scholarship	\$8,000/yr
	Oregon State University Tuition Grant Scholarship	\$6,000/yr
	Oregon State University - Admitted to Honors College	
	Western Washington University President's Scholarship	\$3,000
	President's Award for Outstanding Educational Excellence - Gold Award	
	Washington State Honors Award AP Scholar* AP Scholar with Honor** (2015) <i>Oregon State University</i>	

Elena Murphy	Chapman University Presidential Scholar Award	\$29,000/yr
	DePaul University DePaul Presidential Scholarship	\$18,000/yr
	Loyola Marymount University LMU Arrupe Scholarship	\$20,400
	Loyola Marymount University LMU Award	\$2,400/yr
	Loyola Marymount University LMU Early Action Award	\$2,000/yr
	Loyola University Chicago Damen Scholarship	\$20,000/yr
	St. Edward's University Edwardian Scholarship	\$2,000/yr
	St. Edward's University President's Merit Scholarship	\$18,000/yr
	Montana State University Western Undergraduate Exchange Scholarship	≈\$12,500/yr
	National Hispanic Recognition Program Scholar	
	President's Award for Outstanding Educational Excellence - Gold Award	
	Washington State Honors Award	
	AP Scholar with Honor**	
	<i>Loyola University Chicago</i>	
Lila Neal	Tulane University Distinguished Scholar Award	\$27,000/yr
	President's Award for Outstanding Educational Excellence - Gold Award	
	Washington State Honors Award	
	AP Scholar with Distinction*** <i>Scripps College (Entering Fall 2017)</i>	
Jamea Nielsen	AP Scholar* (2015)	
	<i>Western Washington University</i>	
Gina Olsen	Saint Martin's University Alumni/Friends Scholarship	\$1,000/yr
	Saint Martin's University Catholic High School Award	\$2,000/yr
	Saint Martin's University Chancellor's Scholarship	\$17,500/yr
	Saint Martin's University Martin of Tours Scholarship	\$1,000/yr
	Saint Martin's University Visit Award	\$400
	Western Washington University President's Scholarship	\$4,000
	Western Washington University Western Foundation Scholarship	\$2,000
	National Merit Scholarship Corporation Commended Student	
	President's Award for Outstanding Educational Excellence - Gold Award	
	Washington State Honors Award AP Scholar* <i>Saint Martin's University</i>	
Sarah Ortiz-Jones	Loyola Marymount University LMU Arrupe Scholarship	\$20,300/yr
	Loyola Marymount University LMU Early Action Award	\$2,000/yr
	Santa Clara University SCU Dean's Scholarship	\$18,000/yr
	University of San Diego Alcalá Award	\$25,000/yr
	University of San Diego Catholic Education Scholarship	\$2,000/yr
	University of San Diego USD Scholarship	\$5,550/yr
	University of Washington University Scholarship-Seattle	\$4,000
	National Hispanic Recognition Program Scholar	
	President's Award for Outstanding Educational Excellence - Gold Award	
	Washington State Honors Award	
	AP Scholar with Distinction*** <i>Santa Clara University</i>	
Maéva Osemene	Creighton University Creighton University Award	\$12,000/yr
	Gonzaga University Achievement Scholarship	\$9,500/yr
	University of Colorado Boulder GoldShirt Scholarship	\$3,000/2 yrs
	University of Dayton Deans' Merit Scholarship <i>University of Colorado at Boulder</i>	\$12,500/yr
Allison Patacsil	Loyola Marymount University LMU Arrupe Scholarship	\$16,500/yr
	Loyola Marymount University LMU Award	\$4,500/yr
	Loyola Marymount University LMU Early Action Award	\$2,000/yr
	Santa Clara University SCU Incentive Award	\$6,906/yr
	University of New Mexico Amigo Scholarship President's Award for Outstanding Educational Excellence - Gold Award	\$15,537/yr

<i>Allison Patacsil, Continued</i>	Washington State Honors Award AP Scholar with Distinction*** <i>University of California, San Diego</i>	
Brooke Paulsen	Gonzaga University Dussault Scholarship Seattle University Bellarmine Scholarship University of Portland Holy Cross Scholarship University of Puget Sound Alumni Scholarship <i>University of Portland</i>	\$12,500/yr \$17,000/yr \$18,000/yr \$12,000/yr
Kathryn Peaquin	Boston College Gabelli Presidential Scholarship Seton Hall University Pirate Achievement Award Seton Hall University - University Scholarship National Merit Scholarship Corporation Commended Student President's Award for Outstanding Educational Excellence - Gold Award Washington State Honors Award AP Scholar with Distinction*** Salutatorian <i>Boston College</i>	\$50,480/yr \$3,000/yr \$22,500/yr
Jessica Peterson	Gonzaga University Dussault Scholarship Seattle University Arrupe Scholarship Seattle University McGoldrick Alumni Scholarship University of Redlands Achievement Award College Bound Scholarship Passport for Foster Youth Promise Scholarship <i>Gonzaga University</i>	\$12,500/yr \$11,000/yr \$1,000/yr \$23,000/yr \$3,387/yr \$4,500/yr
Emily Pierce	University of Arizona - Arizona Excellence Scholarship University of Idaho Discover Idaho Silver Scholarship <i>University of Idaho</i>	\$5,000/yr \$2,000/yr
Brooklyn Popp	Gonzaga University Dussault Scholarship <i>Gonzaga University</i>	\$12,500/yr
Eshna Prakash	California Maritime Academy Western Undergraduate Exchange Scholarship Washington State University Engineering Award Placeholder Washington State University Future Cougars of Color Award Washington State University - University Achievement Award President's Award for Outstanding Academic Achievement - Silver Award <i>Washington State University</i>	\$10,000/yr \$500 \$1,000 \$2,000
Shivana Ramdin	AP Scholar with Honor** <i>University of Washington, Bothell</i>	
Cecilia Ramos	<i>Seattle University</i>	
Anja Renkes	Southern Methodist University Athletic Scholarship University of Notre Dame Athletic Scholarship President's Award for Outstanding Educational Excellence - Gold Award Washington State Honors Award AP Scholar with Honor** <i>University of Notre Dame</i>	Undisclosed ≈\$19,900/yr
Emily Riccio	Belmont University General Academic Merit Scholarship Chapman University Chancellor Scholar Award Loyola Marymount University LMU Arrupe Scholarship Loyola Marymount University LMU Early Action Award University of San Diego Catholic Education Scholarship University of San Diego USD Trustee Scholar Award President's Award for Outstanding Educational Excellence - Gold Award	\$8,000/yr \$22,000/yr \$14,100/yr \$2,000/yr \$2,000/yr \$17,500/yr

<i>Emily Riccio, Continued</i>	Washington State Honors Award AP Scholar* <i>Boston College</i>	
Grace Rigoni	Cornish College of the Arts Cornish Art Scholarship President's Award for Outstanding Educational Excellence - Gold Award AP Scholar* <i>Cornish College of the Arts</i>	\$15,000/yr
Samantha Robbins	Seton Hall University - University Scholarship Seton Hall University Summer Scholarship President's Award for Outstanding Educational Excellence - Gold Award Washington State Honors Award AP Scholar* (2015) <i>New York University</i>	\$22,500/yr \$1,500/3 yr
Emma Roffey	The Evergreen State College Evergreen Scholastic Achievement Award School of the Art Institute of Chicago SAIC Creative Honors Scholarship AP Scholar* <i>The Evergreen State College</i>	\$900 \$17,000/yr
Sarah Ronchetti	Austin College Community Scholarship Austin College State Fellowship <i>University of Dayton</i>	\$13,000/yr \$2,000/yr
Victoria Roszkowski	University of California Santa Cruz Undergraduate Dean's Award University of San Francisco Hilltop Award AP Scholar* <i>San Diego State University</i>	\$6,250/yr \$13,000/yr
Margaret Rutherford	University of Oregon Summit Scholarship Western Washington University President's Scholarship Western Washington University Western Foundation Scholarship President's Award for Outstanding Educational Excellence - Gold Award Washington State Honors Award AP Scholar with Distinction*** Salutatorian <i>University of Washington</i>	\$9,000/yr \$6,000/2 yrs \$2,000
Anna Sajer	University of Portland Howard C. Vollum Scholarship Washington State University Student Visit Award Washington State University - University Achievement Award <i>University of Utah</i>	\$20,000/yr \$1,000 \$2,000
Gabriela Santana-Ufret	University of British Columbia Outstanding International Student Award Western Washington University President's Scholarship National Hispanic Recognition Program Scholar President's Award for Outstanding Educational Excellence - Gold Award Washington State Honors Award AP Scholar with Distinction*** <i>University of British Columbia</i>	\$6,000 CD \$3,000
Cassandra Sartain	Colorado State University Presidential Scholarship United States Air Force Academy Appointment University of Colorado Boulder Presidential Scholarship University of Portland President's Scholarship Whitman College Alexander Anderson Scholarship National Merit Scholarship Corporation Commended Student President's Award for Outstanding Educational Excellence - Gold Award Washington State Honors Award AP Scholar with Distinction*** <i>United States Air Force Academy</i>	\$10,000/yr \$120,000/yr \$13,750/yr \$22,000/yr \$14,000/yr

Amanda Schulte	Gonzaga University Achievement Scholarship <i>Gonzaga University</i>	\$9,500/yr
Vlasta Schutzenhofer	National Merit Scholarship Corporation Commended Student President's Award for Outstanding Educational Excellence - Gold Award Washington State Honors Award AP Scholar with Distinction*** National AP Scholar**** Valedictorian <i>University of Pennsylvania</i>	
Christina Sevao	Central Washington University CWU Tuition Award Central Washington University Wildcat Tuition Award Linfield College Linfield Recognition Award Pacific Lutheran University Academic Achievement Award Pacific Lutheran University PLU Q Club Scholarship Glen L. Rudd Foundation Scholarship <i>Pacific Lutheran University</i>	\$1,800/yr \$1,000/yr \$12,000/yr \$17,000/yr \$6,759/yr \$500
Jenna Sneifer	Whitman College Alexander Anderson Scholarship National Merit Scholarship Corporation Commended Student President's Award for Outstanding Educational Excellence - Gold Award Washington State Honors Award AP Scholar with Distinction*** National AP Scholar**** Valedictorian <i>Wesleyan University</i>	\$14,000/yr
Sara Snowden	Loyola University Chicago Presidential Scholarship Marquette University Père Marquette Award Santa Clara University SCU Dean's Scholarship Santa Clara University SCU Incentive Award Seattle University Trustee Scholarship University of San Diego Alcalá Award University of San Diego Catholic Education Scholarship University of San Francisco University Scholars Award President's Award for Outstanding Educational Excellence - Gold Award Washington State Honors Award AP Scholar with Distinction*** Salutatorian <i>Santa Clara University</i>	\$22,000/yr \$22,600/yr \$18,000/yr \$29,112/yr \$22,000/yr \$25,000/yr \$2,000/yr \$22,000/yr
Gellila Solomon	<i>University of Washington, Bothell</i>	
Emma Sommerseth	Loyola University Chicago Presidential Scholarship Santa Clara University SCU Dean's Scholarship University of San Francisco President's Scholarship President's Award for Outstanding Educational Excellence - Gold Award Washington State Honors Award AP Scholar with Distinction*** <i>University of Washington</i>	\$21,000/yr \$6,000/yr \$19,000/yr
Kathryn Spencer	President's Award for Outstanding Educational Excellence - Gold Award Washington State Honors Award AP Scholar with Distinction*** <i>Colorado College</i>	
Stella Stanard	Bard College Bard Scholarship DePaul University DePaul Presidential Scholarship The Evergreen State College Evergreen Scholastic Achievement Award Fordham University Fordham Loyola Scholarship Loyola University New Orleans Crescent City Scholarship	\$41,800/yr \$18,000/yr \$900 \$12,500/yr \$2,000/yr

<i>Stella Stanard, Continued</i>	Loyola University New Orleans President's Scholarship	\$20,000/yr
	Mills College Presidential Scholarship	\$26,000/yr
	St. John's University Catholic High School Award	\$2,500/yr
	St. John's University Hugh L. Carey Award	\$3,000/yr
	St. John's University Provost Scholarship	\$26,000/yr
	Western Washington University President's Scholarship	\$4,000
	Western Washington University Western Foundation Scholarship	\$2,000
	Western Washington University - Admission with Highest Honors	
	National Merit Scholarship Corporation Commended Student	
	President's Award for Outstanding Educational Excellence - Gold Award	
	Washington State Honors Award	
<i>Fordham University</i>		
Sophia Strabo	President's Award for Outstanding Academic Achievement - Silver Award AP Scholar* <i>Whitman College</i>	
Eleanor Strigen	Gonzaga University Deans Scholarship	\$16,000/yr
	Seattle University Bellarmine Scholarship	\$17,000/yr
	University of Portland Holy Cross Scholarship	\$18,000/yr
	President's Award for Outstanding Educational Excellence - Gold Award <i>University of Washington</i>	
Claire Tevaseu	Montana State University Billings MSUB Athletic Scholarship <i>Montana State University, Billings</i>	\$15,958/yr
Kamla Thurtle	Chapman University Dean's Scholarship	\$16,000/yr
	Emerson College Dean's Scholarship	\$16,000/yr
	Seattle University Trustee Scholarship	\$22,000/yr
	Portland State University Western Undergraduate Exchange Scholarship	\$12,262/yr
	President's Award for Outstanding Educational Excellence - Gold Award Washington State Honors Award <i>Chapman University</i>	
Sarah Tocher	National Merit Claremont McKenna College Scholarship	Undisclosed
	National Merit Scholarship Corporation Finalist	
	President's Award for Outstanding Educational Excellence - Gold Award	
	Washington State Honors Award	
	AP Scholar with Distinction*** Salutatorian <i>Claremont McKenna College</i>	
Jaclyn Toepfer	Gonzaga University Trustee Scholarship	\$19,000/yr
	Lewis & Clark College Trustee Scholarship	\$19,000/yr
	Western Washington University President's Scholarship	\$4,000
	Western Washington University Western Foundation Scholarship	\$2,000
	Western Washington University - Admission with Distinction	
	President's Award for Outstanding Educational Excellence - Gold Award Washington State Honors Award AP Scholar with Honor** <i>University of Washington</i>	
Pei-Ming Tokuda	Gonzaga University Trustee Scholarship	\$19,000/yr
	University of San Francisco Provost's Merit Scholarship	\$16,000/yr
	President's Award for Outstanding Educational Excellence - Gold Award	
	Washington State Honors Award AP Scholar* <i>University of Washington</i>	
Grace Trask	Fordham University Fordham Loyola Scholarship	\$12,500/yr
	Fordham University Fordham Tuition Award	\$3,500/yr
	Loyola Marymount University LMU Arrupe Scholarship	\$18,100/yr

Grace Trask, Continued	Loyola Marymount University LMU Award	\$4,200/yr
	Loyola Marymount University LMU Early Action Award	\$2,000/yr
	Saint Mary's College of California Presidential Scholarship	\$24,000/yr
	Santa Clara University SCU Incentive Award	\$3,800/yr
	University of Colorado Boulder Chancellor's Achievement Scholarship	\$6,250/yr
	University of San Diego Alcalá Award	\$25,000/yr
	University of San Diego Catholic Education Scholarship	\$2,000/yr
	President's Award for Outstanding Educational Excellence - Gold Award	
	Washington State Honors Award	
	AP Scholar with Distinction*** <i>Loyola Marymount University</i>	
Isabelle van Zuylen	Santa Clara University Provost Scholar Award	\$23,500/yr
	Southern Methodist University SMU Deans' Scholar Award	\$22,500/yr
	Southern Methodist University - Admitted to University Honors Program	
	Texas Christian University Deans Scholarship	\$20,000/yr
	Texas Christian University - Admitted to John V. Roach Honors College	
	President's Award for Outstanding Educational Excellence - Gold Award	
	Washington State Honors Award	
	AP Scholar with Distinction*** Salutatorian <i>University of Notre Dame</i>	
	Olivia Vasquez	Kenyon College Kenyon Promise Scholarship
Oberlin College John F. Oberlin Scholarship		\$15,000/yr
President's Award for Outstanding Educational Excellence - Gold Award		
Washington State Honors Award		
AP Scholar with Distinction*** <i>Oberlin College</i>		
Alba Villegas-Sotelo	Loyola University Chicago Trustee Scholarship	\$18,000/yr
	St. John's University Catholic High School Award	\$2,500/yr
	St. John's University Hugh L. Carey Award	\$3,000/yr
	St. John's University Provost Scholarship	\$26,000/yr
	Seattle University Bellarmine Scholarship	\$17,000/yr
	University of Oregon Apex Scholarship	\$4,000/yr
	University of Portland President's Scholarship	\$20,000/yr
	Washington State University - University Achievement Award	\$2,000
	Western Washington University Western Scholars Award	\$2,000
	President's Award for Outstanding Academic Achievement - Silver Award <i>St. John's University - Queens</i>	
Kelsey Wall	Carroll College Opportunity Award	\$1,000/yr
	Carroll College Presidential Scholarship	\$15,000/yr
	Creighton University Creighton University Founders Award	\$18,000/yr
	Gonzaga University Regents Scholarship	\$17,500/yr
	Seattle University Trustee Scholarship	\$22,000/yr
	University of Portland President's Scholarship	\$22,000/yr
	President's Award for Outstanding Educational Excellence - Gold Award	
	Washington State Honors Award AP Scholar* <i>Gonzaga University</i>	
Olivia Waltner	President's Award for Outstanding Educational Excellence - Gold Award	
	Washington State Honors Award	
	AP Scholar with Distinction*** Salutatorian <i>Wesleyan University</i>	
	Elizabeth Watt	Gonzaga University Deans Scholarship
Loyola University Chicago Trustee Scholarship		\$18,000/yr
Seattle University Bellarmine Scholarship		\$17,000/yr

<i>Elizabeth Watt, Continued</i>	University of Portland President's Scholarship	\$20,000/yr
	University of San Diego Catholic Education Scholarship	\$2,000/yr
	University of San Francisco Hilltop Award	\$13,000/yr
	AP Scholar* <i>University of San Francisco</i>	
Brynne Weed	Loyola Marymount University LMU Arrupe Scholarship	\$18,400/yr
	Rensselaer Polytechnic Institute Rensselaer Leadership Award	\$20,500/yr
	Trinity University Trustees' Scholarship	\$21,000/yr
	Whitman College Whitman Endowed Scholarship	\$10,000/yr
	President's Award for Outstanding Educational Excellence - Gold Award	
	Washington State Honors Award	
	AP Scholar* <i>Loyola Marymount University</i>	
Racquel West	American University Frederick Douglass Scholarship	\$10,000/yr
	The George Washington University Presidential Academic Scholarship	\$25,000/yr
	Rice University Trustee Distinguished Scholarship	\$24,500/yr
	Whitworth University Mind and Heart Scholarship	\$22,000/yr
	President's Award for Outstanding Educational Excellence - Gold Award	
	Washington State Honors Award	
	AP Scholar with Distinction*** Valedictorian <i>University of Washington</i>	
Molly Whitson	President's Award for Outstanding Academic Achievement - Silver Award	
	AP Scholar* <i>Western Washington University</i>	
Mackenzie Wilson	<i>Western Washington University</i>	
Victoria Wu	George Fox University Bruin Achievement Award	\$8,000/yr
	University of Portland Holy Cross Scholarship	\$10,000/yr
	<i>Seattle University</i>	

Additional Information on Scholarships, Honors, and Awards

≈ Indicates approximate value of the scholarship. Some scholarships are awarded as half-tuition, full-tuition, or tuition plus room and board.

AP Scholar designations are based on exams taken through the end of Grade 12 (May 2016).

* **AP Scholars** are students who earned a score of 3 or higher on three or more AP exams. Forty-four students received this recognition.

** **AP Scholars with Honor** are students who earned a score of 3 or higher on four or more AP exams and have an average AP exam grade of at least 3.25. Eighteen students received this recognition.

*** **AP Scholars with Distinction** are students who earned a score of 3 or higher on five or more AP exams and have an average AP exam grade of at least 3.5. Seventy-three students received this recognition.

**** **National AP Scholars** are students who have taken eight or more AP exams and have scored a 4 or a 5 on each. Thirteen members of the class received this recognition.

President's Award for Outstanding Educational Excellence - Gold Award is given to students who have achieved the 80th percentile on the math (630) or critical-reading (600) portions of the SAT or the ACT composite (26) and have maintained an unweighted grade point average of at least 3.5 on a 4.0 scale. One hundred twenty-three members of the Class of 2016 achieved these standards.

President's Award for Outstanding Academic Achievement - Silver Award is given to students who were within 1 ACT point, 10 SAT points, or .1 grade point average of the Gold Award requirements. Eleven members of the Class of 2016 received this award. Washington State Honors Awards are given to the top 10% of the seniors in the State of Washington on the basis of SAT or ACT scores and an unweighted grade point average. One hundred sixteen members (64.1%) of the Class of 2016 received this award.

HOLY NAMES ACADEMY FACULTY AND STAFF 2016–2017

- Lisa Alfieri '81** BA Fine Arts and Art History, Gonzaga University. *Development Officer*
- Angel Alvarado** BA Foreign Languages/Spanish, MA Teaching, Seattle University. *Spanish*
- Amy Anderson** BA Interdisciplinary Visual Arts, University of Washington; MA Teaching, Seattle University.
Fine Arts Department Chair, Visual Arts
- Jocelyn Antilla** Medical Assisting Certificate, Bellevue College. *Development Assistant*
- Francisco Argueta** *Maintenance*
- Elizabeth Ayer** BA Art History, MA Modern Thought and Literature, Stanford University. *English*
- Michael Bachhuber** BS Wildlife Sciences, University of Washington; MA Teaching, Seattle University.
Science Department Chair, Biology, Environmental Science
- Amanda Baumgartner** (Seymour) BA Religious Studies and International Relations, Gonzaga University. *Religion*
- Melinda Berry** BA Mathematics, University of San Diego; MEd Curriculum and Instruction Technology,
Grand Canyon University. *Mathematics*
- Darren Briner** AA, South Seattle Community College. *Director of Information Technology and School Plant*
- Val Bromfield** *Receptionist, Chapel Weddings Coordinator*
- Joe Broscius** BS Mathematics and Computer Science, Elon University; MS Mathematics, Florida State University.
Mathematics
- Adam Butler** BA History, Gonzaga University; MA History, Providence College. *Social Studies*
- Tricia Cavanaugh '03** BA Psychology and Theology, University of Portland; MA Teaching, Seattle Pacific
University. *Religion, Entrepreneurial Studies, Campus Ministry*
- Sawsan Clark** BA Accounting, Pacific Lutheran University. *Staff Accountant*
- Teri Clark** BS Business Administration, University of LaVerne. *Academic Administrative Assistant*
- Dawn Crowell** *Maintenance*
- Ethan Cudaback** BA Mathematics, University of Washington; MA Teaching, Western Governors University.
Mathematics, Computer Science
- Barbara Dallman** *Executive Assistant to the Principal, Secretary to the Board of Trustees*
- Richard Dang** *Maintenance*
- Kimberly Dawson** BA English, MA Teaching, Seattle University. *Vice Principal of Student Life, English*
- Sister Dorothy Dees, SNJM** BA English, Marylhurst College; MA American Literature, College of the Holy Names.
Library Assistant
- Eileen Denby** BA History, Seattle University. *Director of Admissions and Marketing*
- Megan Diefenbach** BA Journalism and Mass Communications, MEd Student Development Administration,
Seattle University. *College Counselor*
- Veronica Doyle** BA Spanish, BA Humanities, Seattle University; MA Spanish and Latin American
Literatures & Cultures, New York University in Madrid; MA Teaching, Seattle Pacific University. *Spanish*
- Abby Drake '96** BA History, Linfield College; MS Education, Walden University. *Social Studies*
- Sister Mary Annette Dworshak, SNJM** BA English, Fort Wright College; MA Philosophy, Gonzaga University.
Religion
- Jennifer Eiken** BA French/Political Science/Diplomacy and Foreign Affairs, Miami University of Ohio;
MA French, University of Illinois, Urbana-Champaign. *French*

FACULTY AND STAFF 2016-2017, Continued

Kim Ficele-Bowen BA Foreign Languages/Spanish, University of Washington; MA Spanish Language & Culture, University of Salamanca. *International Language Department Chair, Spanish*

Marnie Foust BA Psychology, Whitman College. *CHEER! and Deck the Dome Coordinator*

Ruth Gavino-Lutu BS Psychology, University of Washington; MA Teaching, Seattle University. *Social Studies Department Chair, Social Studies, PE*

Aoife Groppo '00 BS Mathematics, University of Portland; JD, Seattle University. *Alumnae Director*

Kelly Haley BA Physical Education, MS Human Movement and Performance, MA Education, Western Washington University. *Biology*

Sean Harris-Campf BA Political Science, Whitman College; MA Teaching, Willamette University. *Social Studies*

Jennifer Hawes '98 BA History, New York University; M.Phil Modern European History, University of Cambridge; MEd School Counseling, Seattle University. *Academic Mentor/Counselor*

Renee Holland BA Sociology, University of Washington. *CHEER! and Deck the Dome Assistant*

Julia Hudac BA Liberal Studies, MA Education, University of Notre Dame. *Religion*

John Hunt BS Mechanical Engineering, Washington State University; MA Teaching, Western Governors University. *Physics*

Clarise Johnson BA Business, Western Washington University. *Business Assistant*

Tricia Johnson BA Hotel and Restaurant Administration, Washington State University. *Development Director*

David Karp BA English, Swarthmore College; MA, PhD English, University of Washington; MA Teaching, Seattle University. *Art History, English*

Lauren Karp BA English, Santa Clara University; MA Literature and Culture, Oregon State University. *English*

Jennifer Kelly BA History, Gonzaga University; MEd Curriculum and Instruction, Seattle University. *Social Studies*

Jessica Kershner BA Mathematics, George Fox University; MA Teaching, National University. *Mathematics*

Lora Knight '88 BA English, University of Washington; MA Teaching, Seattle University. *Library Specialist, Yearbook, Receptionist*

Marissa Koon BS Mathematics, Whitworth University; MA Teaching, Gonzaga University. *Mathematics*

Kristin Kuzmanich BA English, MA Teaching, Seattle University; MA Educational Administration, University of Notre Dame. *English*

April Little BA English, Ohio University; MA English, University of Washington. *Vice Principal of Academics, English*

Cecilia Lofqvist Traum BA French, Boise State University; MA French Literature, University of Washington. *French, Spanish*

Lacey London BA Education, Western Washington University; MA Coaching Leadership & Athletic Administration, Concordia University. *Athletic Director, Physical Education*

Andrew Lundquist BS Religious Studies, Gonzaga University; MA Transformational Leadership, Seattle University. *Religion*

Meghan MacIntyre BA of Education in Physical Education, Gonzaga University; MEd Educational and Counseling Psychology, University of Missouri, Columbia. *Health, Physical Education*

Caitlin McClain '01 BA Political Science, BA Urban Studies, Loyola Marymount University; MEd Student Development Administration, Seattle University. *Assistant Admissions Director, Crew Coordinator*

Marianne McGah '01 BA Theology, University of Portland; MA Secondary Education, Providence College; PhD Education, Seattle University. *Assistant Campus Minister, Religion Department Chair, Religion*

Faculty/Staff Continued on Next Page

FACULTY AND STAFF 2016-2017, Continued

- Emily McKenzie '01** BA Psychology, Seattle University; MA Counseling Psychology, Northwest University.
Academic Mentor/Counselor
- Matthew Merlino** BA English and Creative Writing, Richard Stockton College of New Jersey; MA and PhD English, University of Pennsylvania. *English Department Chair, English*
- Thomas O'Connor** BA English, University of Toronto. *Publications Editor, Website Manager*
- Francis Olson** BA Business Administration, Seattle University. *Business Manager*
- Sister Rosemary Perisich, SNJM '56** BA Latin, Marylhurst College. *Community Liaison*
- Sam Procopio** BS Mathematics, University of Portland; MEd Secondary, University of Notre Dame. *Mathematics Department Chair, Computer Science, Mathematics*
- Julie Raney '82** BA Business Administration, Seattle University. *Assistant Business Manager*
- Don Rice** AA, Highline Community College. *Maintenance Director and Information Technology Assistant*
- Sister Linda Riggers, SNJM** BA Social Studies, Fort Wright College of the Holy Names; MA Religious Education, Boston University. *Registrar and Attendance Officer*
- Detra Rugon** BS Psychology, University of Southern California; BS Education, California State University; MEd School Administration, Seattle Pacific University. *English*
- Rebecca Sager '07** BA English Literature, MA Teaching, University of Washington. *English*
- Julia Sarewitz** BA Music Education, University of Oregon. *Music Director*
- Kayli Schulz '12** BA Biochemistry and Mathematics, Clark University. *Mathematics*
- Anna Sebree '01** BA English, MA Library and Information Science, University of Washington. *Librarian*
- Becca Shope '95** BS Biology, Western Washington University, MA Education, Antioch University. *Chemistry, Physics, Statistics*
- Patti Smith** BA Mathematics, Gonzaga University; MEd Learning and Technology, Western Governors University. *Mathematics*
- Christie Spielman '68** BA Education, Western Washington University. *Archivist*
- Elizabeth Eldredge Swift '71** BA Mathematics, BA Chemistry, MA Library Science, University of Washington. *Head of School & Principal, Physics*
- Alice Tanaka** BA Mathematics, MEd Mathematics, MA Counseling and Guidance, University of Oregon; EdD Education Leadership, Seattle University. *College Counselor*
- Julie Tilghman** BA Psychology/Spanish, MEd Secondary, University of Notre Dame. *Campus Minister, Religion*
- Donna Tracey** BA Political Science, University of California, Los Angeles. *Development Assistant*
- Gina Vickrey** BS Biology, Bradley University; MEd Science Education, Illinois Institute of Technology. *Biology, Chemistry*
- Sarah Wahlen** BA Philosophy, University of Washington, MA Theology, Seattle University. *Religion, Theatre Director*
- Taryn Webber** BA Music Education, Syracuse University; MA Music Education, University of Washington. *Assistant Music Director*
- Erin Wicklund '97** BS Food Science and Nutrition, Central Washington University. *Planned Giving Officer*
- Jenny Wielbruda** BS Chemical Engineering, University of Tennessee; MA Secondary Education, Ball State University. *Chemistry*
- Brenin Williams** *Director of Grounds and Vehicles, Technology Assistant*

